

50th
वार्षिक प्रतिवेदन
ANNUAL REPORT

2011-12



GOLDEN JUBILEE CELEBRATIONS

राष्ट्रीय सूक्ष्म, लघु और मध्यम उद्यम संस्थान (निम्समे)

National Institute for Micro, Small and Medium Enterprises

An organisation of the Ministry of MSME, Government of India

Yousufguda, Hyderabad 500 045

CONTENTS

<u>CHAPTER No.</u>		<u>Page No.</u>
I	INTRODUCTION	01
II	GROWTH AND PERFORMANCE	10
III	SKILL DEVELOPMENT PROGRAMMES UNDER ASSISTANCE TO TRAINING INSTITUTIONS (ATI)	16
IV	ACTIVITIES OF THE INSTITUTE	20
V	USE OF OFFICIAL LANGUAGE	31
VI	VIGILANCE ACTIVITIES	32
VII	CITIZENS' CHARTER AND RIGHT TO INFORMATION (RTI) ACT	33
VIII	ANNEXURES	35
	1. Announced National Programmes	36
	2. Seminars and Workshops	41
	3. International Programmes	43
	4. Research and Consultancy Projects	45
	5. Performance Indicators since inception	46
	6. Alumni of participants of International Programmes	48
IX	FINANCIAL STATEMENTS	51
	Statutory Auditors Report	52
	Balance Sheet as at 31 st March, 2012	54
	Income and Expenditure for the year 2011-12	55
	Schedules forming part of Balance Sheet as at 31 st March, 2012	56
	Schedules forming part of Income and Expenditure for the year 2011-12	64
	Schedule 24: Significant Accounting Policies	67
	Schedule 25: Notes to Accounts	67
	Receipts and Payments for the year ending 31 st March, 2012	70

INTRODUCTION

1.1. BACKGROUND

1.1.1. Following the recommendations of the Working Group on the Third Five Year Plan for Small Scale Industries, the Government of India had decided to set up an autonomous institution for the SSIs. Accordingly, “Central Industrial Extension Training Institute (CIETI)” was created in Delhi in October 1960 as a Department of the Central Government under the Ministry of Commerce and Industry. The main objective was to provide training to the personnel of the Central Small Industries Organization as well as of the departments of industries of the State Governments.

1.1.2. In 1962, in pursuance of Resolution No.27-SSI(C)(6)/62 dated 30th July 1962 of the Ministry of Commerce and Industry of the Government of India, the CIETI was shifted to Hyderabad and converted into an autonomous Society, registered under the Hyderabad Societies Registration Act No. I of 1350 Fasli in the name and style of “Small Industry Extension Training (SIET) Institute”, Hyderabad. All the functions of the CIETI were, with effect from the forenoon of 1st July 1962, taken over by the “Small Industry Extension Training Institute” and the CIETI ceased to function as a Government Department from the afternoon of the 30th June 1962.

1.1.3. Consequent upon recognition of the Institute as a Centre of Excellence by UNIDO, the Government of India has changed the name of the Institute as “National Institute of Small Industry Extension Training” (nisiet) with effect from 28th September, 1984.

1.1.4. Pursuant to the enactment of MSMED Act, 2006, the name of the Institute has again been changed as “National Institute for Micro, Small and Medium Enterprises” (**ni-msme**) with effect from 11th April, 2007.

1.1.5. The objectives for which the Society was established were promotion and development of micro, small and medium enterprises and enhancement of their competitiveness through the following activities:

- to provide, supervise and plan training for persons engaged in MSME enterprise development and management activities
- to undertake, sponsor or plan research programmes related to the development of MSMEs, and
- to enter into and execute technical agreements & assistance with international or other organisations for the provision of services for the development of MSME sector
- to offer and organize educational programmes in the promotion of micro, small and medium enterprises

1.1.6. The vision of the Institute is to emerge as a global centre of excellence for creation, sustenance and growth of MSMEs and to impact the growth and development of MSMEs through services in the areas of policy, entrepreneurship, technology, information, education, management and extension.

1.1.7. The management of the Institute rests with the Governing Council and the Executive Committee, appointed by the Government of India. The Hon’ble Minister of MSME, Government of India is the Chairman of the Governing Council; the Secretary to the Government of India, Ministry of MSME is the Chairman of the EC and the Additional Secretary and Development Commissioner (MSME) is the Vice-Chairman, of Executive Committee.

1.1.8. The Executive Committee acts through the Director General, who is the academic and executive head of the Institute. Dr. C. Kondaiah was the Director General untill 30th June, 2011. Consequent upon his retirement Mr. P. Udaya Shanker became the Director General in-charge.

1.2. THRUST AREAS

1.2.1. In line with the national objective of economic development through industrialization, and based on the expertise that is available, the Institute has identified some thrust areas that need emphasis and exploration. These are:

- * Entrepreneurship Development & Research
- * Women Entrepreneurship
- * Technology Upgradation & Transfer
- * Policy Issues
- * NGO Networking
- * Environment Concerns
- * Cluster Development
- * Management Consultancy
- * Quality Management Services
- * Financial Services
- * Information Services

1.2.2. The Institute is adopting growth oriented administrative and policy measures in total correspondence to the national objective of industrial development, thereby expanding its activities to include help and support to medium, small and micro enterprises in particular. The Institute tries to focus its activities through:

- * Training
- * Research
- * Consultancy
- * Education
- * Information Services, and
- * Information Technology Services

1.2.3. Enterprise promotion and entrepreneurship development being the central focus of **ni-msme**'s functions, the Institute's competencies converge on the following aspects:

- Enabling enterprise creation
- Capacity building for enterprise growth and sustainability
- Creation, development and dissemination of enterprise knowledge
- Diagnostic and development studies for policy formulation
- Empowering the under-privileged through enterprises



1.2.4. Following is the functional spectrum of the Institute.

Strategies

Cluster development
 Entrepreneurship
 Micro finance
 Business development services
 Sub-sector development
 Management development programmes
 IT programmes

Programmes

National announced and sponsored
 International announced and sponsored
 Customised & collaborative programmes

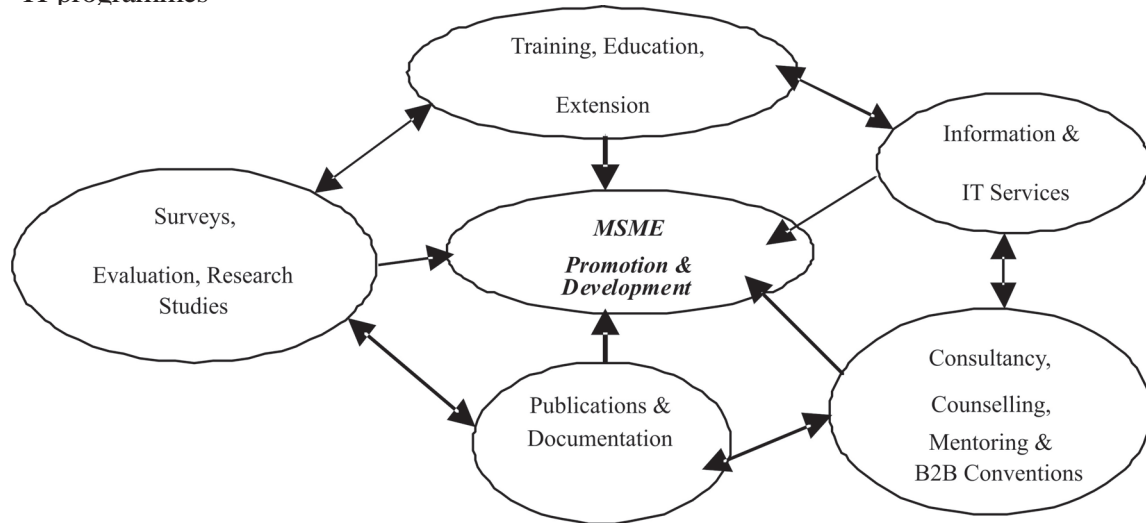


Fig: Functional Spectrum

1.2.5. The faculty at **ni-msme** is knowledge-rich with accrued experience and tested expertise, lending the edge of quality to the specialised and innovative training programmes, seminars and workshops organised by the Institute.

1.2.6. Spacious and ultra-modern air conditioned classrooms and conference halls with state-of-the-art instructional and functional gadgets – high resolution LCD projectors, computers with specific software for cutting edge IT courses, advanced laptops, marker boards in addition to in-plant training make learning at **ni-msme** a memorable experience.

1.3. PROGRAMMES AND OTHER SERVICES

1.3.1. Announced National Programmes

ni-msme offers and conducts regular training programmes for the development of MSMEs within the country as well as in other developing countries. The regular programmes range from one week to 12 weeks, in different disciplines to suit the requirements of client organisations.

Information Technology programmes for the educated unemployed youth are being conducted to develop their skills. IT programmes are also conducted for the benefit of employees/executives of the sponsoring organisations.

1.3.2. Sponsored National Programmes

Training programmes are also conducted at the request of client organisations as per their needs. Such programmes are conducted on-campus and off the campus.

1.3.3. Outstation Programmes

Entrepreneurs/industrialists are tapped in the customised off-campus programmes at the sponsorship or initiative of the Small Industry Associations of different districts/States or other organisations, at client-preferred locations.

1.3.4. Seminars and Workshops

Theme based seminars and workshops on different subjects in accordance with the Government policy on MSME sector, are also conducted on the campus.



1.3.5. Announced and Sponsored International Programmes

Long-term programmes are offered and conducted to suit the needs of the developing countries. Customised programmes at the request of sponsoring organisations like CFTC, MEA, ILO and UNIDO, BSCIC, ARB Bank (Ghana), and Central bank of Srilanka etc., are also conducted.

1.3.6. Research & Consultancy

ni-msme has a long and considerable experience in conducting research studies, which has contributed significantly to accomplishing its objectives. The research projects so far taken up are multifaceted, dealing with micro and macro aspects of small enterprise management, extension, development and promotion.

With long experience in conducting a wide variety of studies relating to assessment, evaluation, impact, problems, identification – diagnostic and problem solving approaches, behavioural aspects, marketing and other managerial aspects-modernisation, technology transfer, etc., **ni-msme** is continuing to serve its clientele through its research activities.

1.3.7. Information & Library Services

ni-msme's Small Enterprises National Documentation Centre (SENDOC) has been suitably strengthened to provide a comprehensive database on domestic as well as international business opportunities, trade enquiries, regulatory systems, etc., of value to the MSME entrepreneurs. Such database services are also offered on-line to MSME associations in the country.

The Institute's library services are being utilised by a large number of members during the working hours as well as before and after hours.

1.3.8. Publications

ni-msme publishes a spectrum of journals and books as part of its academic activities. SEDME journal, a well-known quarterly, Techman, Management Digest, and other journals supplement the training inputs.

1.3.9. Campus

Set amidst a sprawling, serene campus, **ni-msme** is ideally located for academic and training pursuits. Natural and peaceful surroundings, perfect landscaping and lush greenery compete with each other to help the participants relax in mind and body. Spacious and ultra-modern air-conditioned classrooms and conference halls with state-of-the-art instructional and functional gadgets, computers with specific software for cutting edge IT courses, advanced laptops and other instructional tools make learning at **ni-msme** an engaging pursuit.

ni-msme, Hyderabad

The physical academic infrastructure includes the following units:

- Conference Hall : 350 persons capacity
- Multi-purpose Hall : 125 persons capacity
- 18 Lecture Halls : 30 – 40 persons capacity (each)
- Faculty work-stations with support services



1.3.10. Guest Room Complex

Clean and comfortable guest rooms that can accommodate over 250 guests, with modern amenities and facilities on par with international standards, clean and hygienic cuisine make the Institute's hostel complex a home away from home for the participants. The attached hospitality wing has the following features:

- Multi-cuisine mess with 3 dining halls
- Accommodation - 130 rooms to accommodate 260 persons
- Guests and participants are accommodated in a/c or non a/c rooms, with suites for VIPs and dignitaries
- All rooms provided with TV, Wi-Fi, and telephone



Construction of an additional floor (II floor) over D, E & F guest room blocks at an estimated cost of ₹. 3.35 crore, as approved by the Ministry was taken up during the year 2009-10. The construction was entrusted to Central Public Works Department (CPWD). The additional floor was completed and rooms are in use.

1.3.11. Sports and Games

A Jogging Track and Gym for the fitness freaks, Tennis and Volleyball courts for the outdoor sports lovers, indoor facility for Badminton, Table Tennis, Chess and Carroms are provided within the campus.

1.3.12. Recreational Facilities

Kalangan, the amphitheatre provides an ideal platform for staging entertainment items and for show-casing the creative talents of the participants.

MUSINGS is another ideal outdoor location in the campus set amidst tall trees with a pond, best suited for get-togethers.

UTSAV, *VANASTHALI* and *PRERANA* are other locations ideal for outdoor and indoor meetings and social gatherings.

1.4. ORGANISATIONAL SET-UP

1.4.1. The management of the Institute rests with the Governing Council and the Executive Committee, appointed by the Government of India.

1.4.2. The Hon'ble Minister of MSME, Government of India is the Chairman of the Governing Council. The Secretary to the Government of India, Ministry of MSME is the Chairman and the Additional Secretary and Development Commissioner (MSME) is the Vice-Chairman of the Executive Committee.

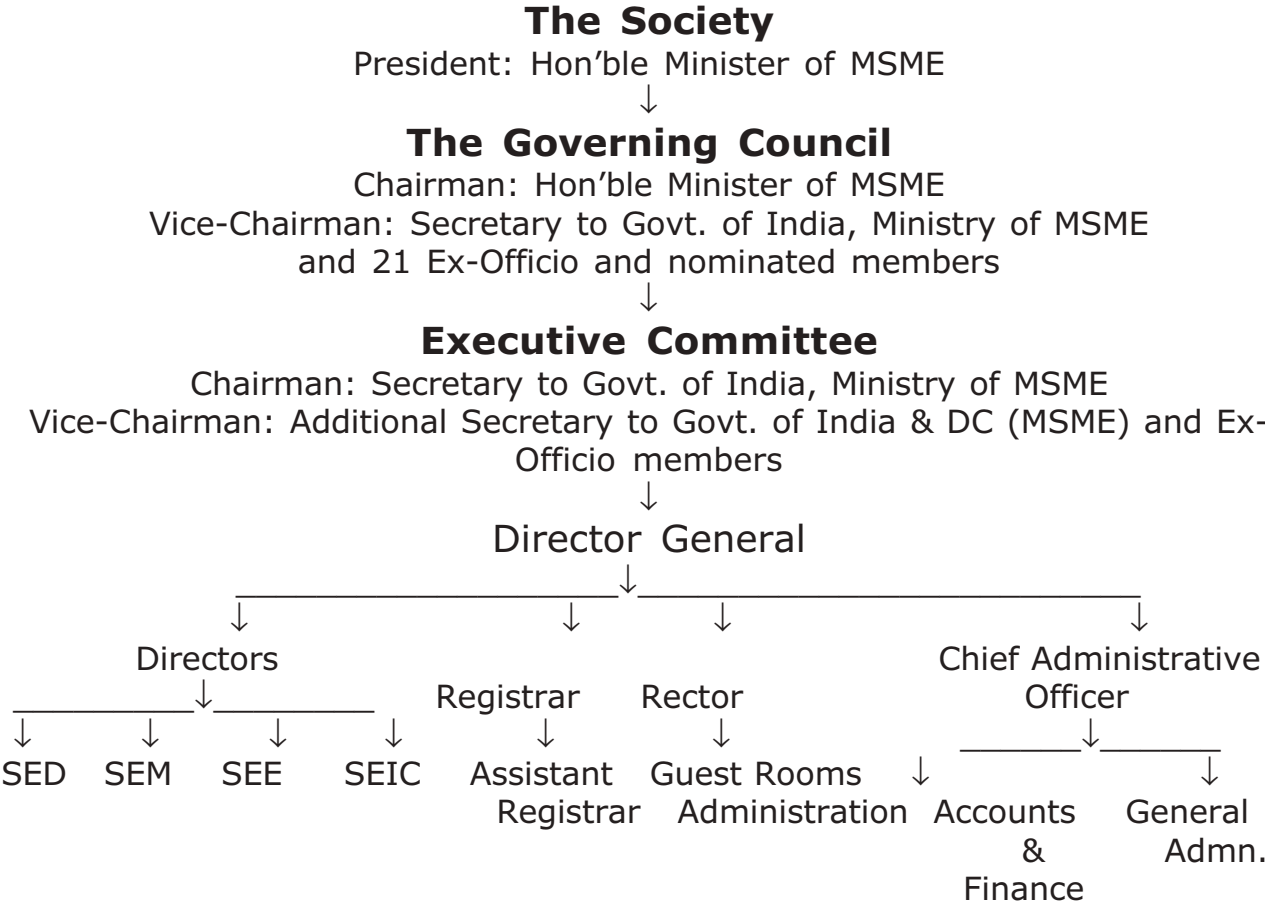
1.4.3. The Executive Committee acts through the Director General, who is the academic and executive head of the Institute. Mr. M. Chandrasekhar Reddy is the current Director General.

1.4.4. The Hon'ble Minister of Micro, Small and Medium Enterprises is the President of the Society. Forty-nine meetings of the Society were held and the 50th meeting is scheduled to be held in the Golden Jubilee Celebrations Year, 2012-13.

1.4.5. The Director General is the Head of the Institute and the Member-Secretary of the Executive Committee and the Governing Council. The Director General is assisted by the Directors of Schools of Excellence and the Registrar in academic pursuits, and by the Chief Administrative Officer in overall administration and general administrative matters.



1.4.6. The organisational structure of the Institute is depicted in the following organogram:



1.4.7. Schools of Excellence

1.4.7.1. In acceptance of the recommendations of the Staff Inspection Unit, Department of Expenditure, Ministry of Finance, Government of India as also the Peer Review on the activities of the Institute, the existing Centres and Cells were formed into four theme-focused Schools which, as attachments, have twelve Centres and five Cells functioning. Each of these pursue a specific activity, designing tailor-made, collaborative programmes for the benefit of client organisations, entrepreneurship leaders, government, bureaucrats, public private partnership company executives, trainers and so on.

1.4.7.2. School of Enterprise Development (SED)

Centres:

- Centre for Industrial Planning and Development (C-IPD)
- Centre for Policy Research (C-PR)
- National Resource Centre for MSME Cluster Development (NRCD)

Cells

- **nimsme** NGO Network (N-CUBE)
- Economic Investigation and Statistical Cell (EISC)

1.4.7.3. *School of Enterprise Management (SEM)*

Centres:

- Centre for Promotion of Advanced Management Practices (C-PAMP)
- Centre for Intellectual Property Rights (C-IPR)
- Centre for Logistics and Integrated Materials Systems (C-LAIMS)
- Centre for Environmental Concerns (C-ECO)
- Centre for Industrial Credit and Financial Services (C-ICFS)

1.4.7.4. *School of Entrepreneurship and Extension (SEE)*

Centres:

- Centre for Entrepreneurship and Industrial Extension (C-EIE)
- Centre for Consultancy and Counselling (C-CC)

Cells:

- Employee Assistance Cell (EAC)
- Women Studies Cell (WSC)

1.4.7.5. *School of Enterprise Information and Communication (SEIC)*

Centres:

- Centre for Communication and Information Technology (C-CIT)
- Small Enterprises National Documentation Centre (SENDOC)

Cell:

- Live Projects Cell (LPC)

1.4.8. The staff strength of the Institute is indicated in the following table:

Group	Posts sanctioned	Posts filled	Post vacant
A	23	10	13
B	05	05	--
C	97	80	17
Total	125	95	30

1.4.9. Retirement on superannuation

The following employees retired during the year:

S. No.	Name of employee	Designation	Date of retirement
1.	Shri N.R. Prasad Reddy	Associate Faculty Member	31.05.2011
2.	Shri Shaik Shali Pylman	Jr.Admn. Assistant	31.05.2011
3.	Shri G. Narasimha	MTA	31.05.2011
4.	Dr. C. Kondaiah	Director General	30.06.2011
5.	Shri K.Muralaiah Setty	Superintendent	30.06.2011
6.	Smt.P. Pushpavathamma	Sr. Admn. Assistant	30.06.2011
7.	Dr. G.P. Vallabh Reddy	Faculty Member	29.02.2012
8.	Smt. N. Hymavathi	Sr. Stenographer	31.03.2011

GROWTH AND PERFORMANCE

2.1. The National Institute for Micro, Small and Medium Enterprises since its inception as Small Industry Extension Training Institute was dependent on the Government of India for meeting its recurring and non-recurring expenditure every year.

2.2. The Institute from its inception (1962-63) till 31st March, 2012 (2011-12) has conducted 6,825 national and international training programmes/seminars and workshops imparting training to 2,28,925 participants besides 315 educational programmes benefiting 7,757 persons. In addition, 854 consultancy and research projects were also executed.

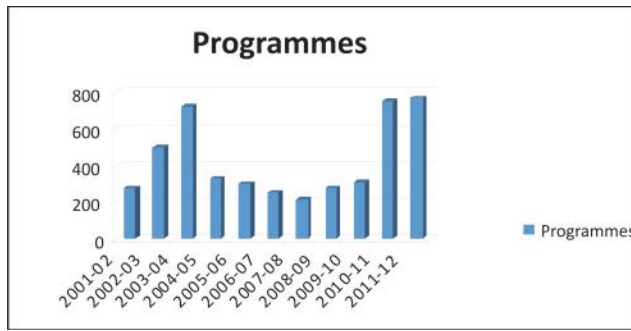
2.3. Pursuant to the recommendations of the 5th report of the Expenditure Reforms Commission and the directives from the Government of India, the Institute entered into new avenues of income sources and such efforts resulted in the Institute becoming self-supporting from 2001-02 in meeting its recurring expenditure every year. However, special grant for meeting expenditure, like implementation of 6th Pay Commission Recommended Pay Scales, etc. was extended as one time grant.

2.4. Physical performance from 2001-02 to 2011-12

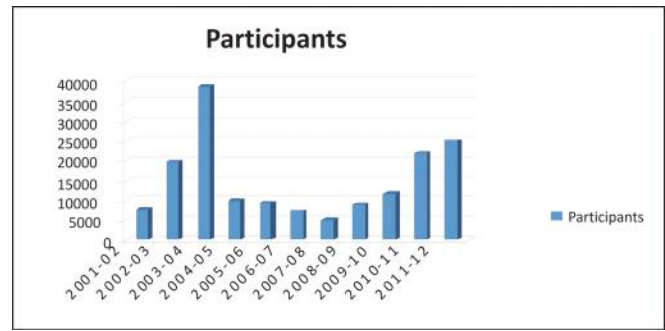
2.4.1. The target of number of programmes and participants and actual achievement of each year are indicated in the following table.

Year	Number of Programmes and Projects		Number of Participants trained	
	Target	Achieved	Target	Achieved
2001-02	200	274	6030	7642
2002-03	225	498	6050	19637
2003-04	300	723	19516	38805
2004-05	222	329	6473	9939
2005-06	205	302	4120	9173
2006-07	251	255	4430	7235
2007-08	220	214	5000	5000
2008-09	220	278	6600	8878
2009-10	260	305	10000	11565
2010-11	713	756	21448	21912
2011-12	857	772	25016	25079

Table 1: Physical performance



Graph 1: Programmes



Graph 2: Participants

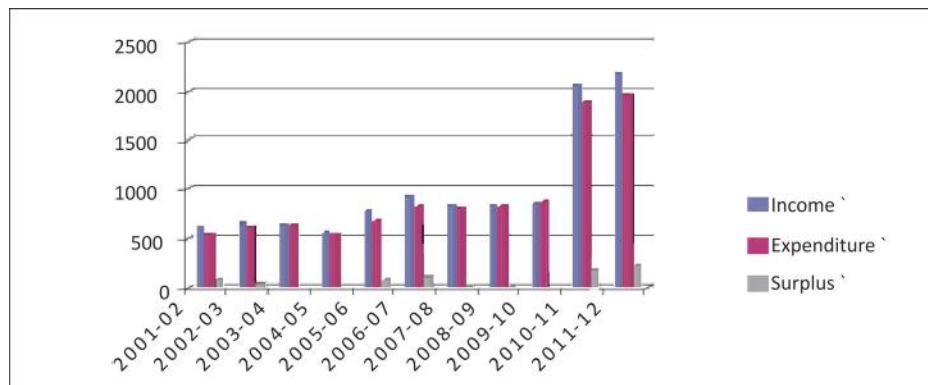
2.5. Financial Performance from 2001-02 to 2011-12

The target of income and actual achievement and surplus generated of each year are indicated in the following table.

(₹ in lakh)

Year	Income		Expenditure	% of income recovery	Surplus
	Target	Actual			
	₹	₹	₹		₹
2001-02	675.00	621.42	539.56	115.17	81.86
2002-03	701.00	646.25	605.94	106.35	40.31
2003-04	635.66	640.65	631.71	101.42	8.94
2004-05	692.95	561.38	558.40	100.53	2.98
2005-06	605.30	771.22	685.66	105.92	85.56
2006-07	636.15	933.79	827.66	112.82	106.13
2007-08	665.89	831.14	812.41	102.31	18.73
2008-09	752.00	833.60	823.85	101.18	9.75
2009-10	840.09	844.88	880.16	96.00	0.00
2010-11	1904.87	2052.49	1848.44	111.04	204.05
2011-12		2171.76	1950.84	111.32	220.92

Table 2: Financial performance



Graph 3: Financial performance

2.6. Physical Performance Indicators of last three years

2.6.1. During the reported year the programmes/projects increased by 2% to 772 against 756 in the previous year. Similarly, the number of participants had also registered an increase of 14.45% to 25079 against 21912 in the previous year. The following table indicates the number of programmes/projects executed and participants trained.

Activity	2011-12		2010-11		2009-10	
	No. of Programmes	No. of Participants	No. of Programmes	No. of Participants	No. of Programmes	No. of Participants
Skill Development Programmes under ATI	536	15390	411	11166	07	170
National Announced Programmes	31	2339	14	864	21	915
National Sponsored Programmes	60	2233	148	4616	92	3448
Seminars and Workshops	47	4705	71	4921	95	6779
International Announced Programmes	20	371	18	303	12	222
International Special Programmes	04	41	03	42	02	31
Research & Consultancy Projects	74	--	91	--	76	--
Total	772	25079	756	21912	305	11565

Table 3: Physical performance indicators

2.6.2. There was a 60% decrease in the number of sponsored programmes during the year over 2010-11. The reasons for the decrease were that (a) Ministry of Food Processing Industries, Govt. of India had assigned only 25 programmes as against 44 in 2010—11, (b) Ministry of Heavy Industries & Public Enterprises had not assigned any programmes during the year compared to the 22 programmes conducted last year, (c) State Bank of India had assigned 8 programmes during last year and no similar programmes were requisitioned by them during the year, (d) four programmes only as against six last year sponsored by the Directorate General, Employment & Training, Ministry of Labour, Employment & Training, (e) one programme as against four conducted last year for the National Minister Development Corporation, (f) Office of the DC (MSME) allotted 7 programmes during 2010-11, while six only were allotted during 2011-12, and (g) 24 programmes only were conducted during the year for other different client organisations as against 45 programmes during the previous year.

2.6.3 The Institute could not conduct more seminars and workshops due to depletion of faculty strength on the one hand, and the involvement of available faculty time in the execution of ESDPs/EDPs/ToTs under Assistance to Training Institutions Scheme of the Ministry on the other.

2.6.4. During 2010-11 the projects relating to rendering technical services to SFURTI clusters (10 of KVIC and 12 of Coir Board) were completed. No further projects under this scheme were allotted during 2011-12.

2.6.5. In spite of shortfall in the programmes/projects, increase in the overall performance was very much noticeable as there was an increase of 2% from 756 programmes during 2010-11 to 772 during the year while there was an increase of 14% from 21,912 during 2010-11 to 25,079 participants during the year.

2.7. Financial Performance Indicators for last three years

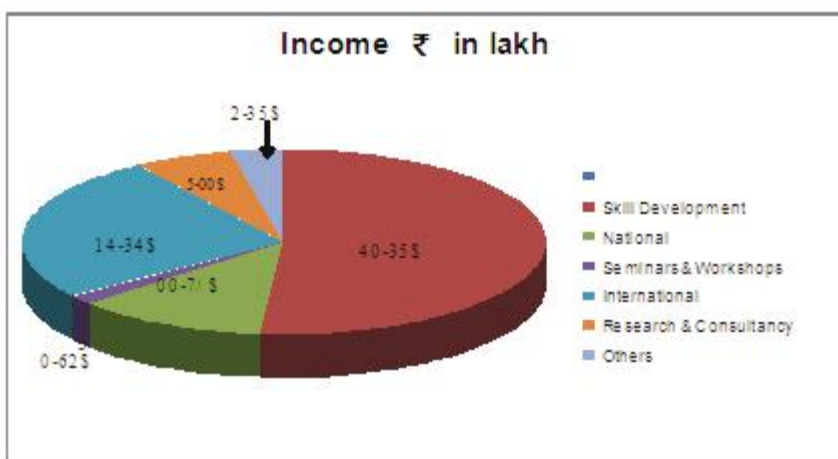
2.7.1. The Institute achieved an all time record in income generation from various activities executed during the year 2011-12. The income generation had increased by 5.81% to ₹ 2,171.76 lakh against ₹2,052.49 lakh in the previous year. The break-up of the income is indicated in the following table:

(₹ in lakh)

S.No.	Programmes/Projects	2011-12	2010-11	2009-10
	Income	₹	₹	₹
1.	Skill Development Programmes under ATI	1117.58	1008.65	15.72
2.	National Programmes	256.25	421.39	415.32
3.	Seminars and Workshops	37.53	17.57	39.62
4.	International Programmes	548.08	422.87	227.63
5.	Research & Consultancy	134.25	105.30	94.18
6.	Other miscellaneous income	74.39	76.71	50.25
Total income		2168.08	2052.49	842.72
Expenditure		1951.15	1848.44	880.15
Surplus		216.93	204.05	-37.43

Table 4: Financial performance indicators

2.7.2. As against the income of ₹ 2,168.08 lakh for the year, the expenditure incurred was ₹1,951.15 lakh. Thus the surplus income generated for the year was ₹2,16.93lakh compared to ₹ 2,04.05 lakh for the previous year, 2010-11.



Graph 4: Income from activities

2.7.3. The activity-wise net surplus income for the year is indicated as below:
(₹ in lakh)

Sl. No	Activity	Income ₹	Expenditure ₹	Surplus ₹
1	Skill Development Programmes under AIT	1117.58	1088.30	29.28
2	National Programmes	256.25	202.72	53.53
3	Seminars & Workshops	37.53	19.26	18.27
4	International Programmes	548.08	485.14	62.94
5	Research & Consultancy	134.25	155.73	-21.48
6	Other miscellaneous income	74.39	--	74.39

Table 5: Activity-wise income, expenditure and surplus

2.7.4. Services rendered to different Ministries and other clientele

1. Ministry of Micro, Small and Medium Enterprises
2. Ministry of External Affairs
3. Department of Economic Affairs, Ministry of Finance
4. Ministry of Food Processing Industries
5. Development Commissioner (MSME), Ministry of MSME
6. Development Commissioner (Handicrafts), Ministry of Textiles
7. Development Commissioner (Handlooms), Ministry of Textiles
8. Directorate General, Employment & Training, Ministry of Labour & Employment
9. Department of Science & Technology, Ministry of Science & Technology
10. Department of Public Enterprises, Ministry of Heavy Industry and Public Enterprises
11. Ministry of Development of North East Region
12. Khadi & Village Industries Commission, Ministry of MSME
13. Coir Board, Ministry of MSME
14. National Bank for Agriculture and Rural Development
15. National Backward Finance & Development Corporation
16. National Mineral Development Corporation
17. Department of Rural Development, Govt. of Andhra Pradesh
18. Employment Generation & Marketing Mission (EGMM), Govt. of Andhra Pradesh
19. Rashtriya Madhyamika Siksha Abhiyan (RMSA), Govt. of Andhra Pradesh
20. Maharashtra State Minorities Commission, Mumbai
21. Security Printings Minting Corporation of India Ltd., Ministry of Finance
22. State Bank of India
23. Andhra Bank
24. National Agricultural Bank for Agriculture and Rural Development (NABARD)
25. HDFC
26. Family Health International, Hyderabad

27. Nagarjuna Construction Company Ltd., Hyderabad
28. APMAS, Hyderabad
29. Aide et Action, Hyderabad
30. America India Foundation, New Delhi
31. Oriental Bank of Commerce
32. APITCO, Hyderabad
33. Krishi Vignan Kendras
34. District Industries Centres
35. Industries Departments of different States
36. National Fish Development Board
37. Geological Survey of India
38. Heritage Foods
39. Industries Department, Government of Kerala
40. William J. Clinton Foundation
41. Chatana Society, Hyderabad
42. Sri Ram Corporation
43. Krishi Vignan Kendras
44. Industries Department of Madhya Pradesh
45. Industries Department of Karnataka
46. Industries Department of West Bengal
47. Industries Department of Orissa
48. Industries Department of Maharashtra
49. Industries Department of Sikkim
50. Industries Department of Tamil Nadu

SKILL DEVELOPMENT PROGRAMMES UNDER ASSISTANCE TO TRAINING INSTITUTIONS (ATI)

3.0. SCHEME OF ASSISTANCE TO TRAINING INSTITUTIONS

3.1. The Ministry of Micro, Small and Medium Enterprises promotes the development of micro and small enterprises in the country with the objective of creating self-employment opportunities and upgrading the relevant skills of existing and potential entrepreneurs. In order to promote the establishment of new enterprises and emergence of new entrepreneurs, the Ministry has been implementing various schemes and programmes.

3.2. As part of such schemes, the Ministry had launched during last quarter of 2009-10 a new “Scheme of Assistance to Training Institutions” in order to ensure that young entrepreneurs are encouraged and suitably equipped to go into new ventures by imparting entrepreneurship and skill development training through three national level Entrepreneurship Development Institutes.

3.3. The National Institute for Micro, Small and Medium Enterprises as one of the three national level Entrepreneurship Development Institutes, has been playing a major role as APEX Institution of the Ministry, in implementation of this scheme.

3.4. The number of programmes conducted, participants trained and number of trainees who had achieved self-employment and wage employment during the first three years of implementation of the scheme are indicated in the following table.

Sl. No	Description	2011-12	2010-11	2009-10
1	Number of Programmes	536	411	07
2	Number of Trainees	15390	11166	170
3	Self-employment achieved and percentage	Post -training follow up was in progress	3041	Training of Trainers Programmes. Hence, no wage/self-employment.
4	Wage-employment achieved and percentage		(27.23%)	

Table 6: Skill Development Programmes and Participants

3.5. The Ministry had released financial assistance of ₹1111.22 lakh for conducting 276 programmes covering 8280 trainees by the Institute itself and for conducting 260 programmes covering 7080 trainees through Partner Institutions.



3.6. The Partner Institutions of **ni-msme** in different States of the country who had conducted the allotted programmes are listed below.

Sl. No	Name of the Partner Institution	Address
1	Agnel Entrepreneurship Development Institute	Agnel Technical Education Complex Agnel Ashram, Verna, Goa
2	ASSIST	Ramnagar, Ongole, Prakasham, Andhra Pradesh
3	Association of Women Entrepreneurs of Karnataka (AWAKE)	B-76, KSSIDC Industrial Estate, Rajajinagar, Bangalore Karnataka
4	Bhagavatula Charitable Trust (BCT)	Haripuram, Rambilli Visakhapatnam Andhra Pradesh
5	Boopathi Educational & Social Trust	67/1, Patel Road Virudhnagar, Andhra Pradesh
6	Centre for Entrepreneurship Development CED (TN)	No.54, Vasuvasapuri, 1st Street , Gnaolipuram Arasardi, Madurai, Tamil Nadu
7	Centre for Entrepreneurship Development (Hyd)	Survey no.342, ALEAP Industrial Estate, Near Pragathi Nagar, Opp. Road to JNTU, Kukatpally, Hyderabad-500072
8	Centre For Entrepreneurship Development Madhya Pradesh (CEDMAP)	16-A, Arera Hills, Bhopal, Madhya Pradesh
9	Centre For Entrepreneurship Development Of Karnataka (CEDOK)	Plot No. 1 (A&B), Belur Industrial Area, Belgaum Road, Dharwad, Karnataka
10	CIPET-IDA	Phase-II, Cherlapally, Hyderabad, Andhra Pradesh
11	Entrepreneurship Development Institute	Entrepreneurship Development Institute TI Building, Guindy, Chennai, Tamil Nadu
12	Gulbarga Industrial Estate Manufacturers Association (Regd)	Spl. Plot 15, Industrial Estate MSK Mill Road, Gulbarga, Karnataka
13	JSS Rural Development and Self Employment	Mariyala, Charmrajanagar Mysore, Karnataka
14	KITCO Ltd	P.B.No.1820, Ravipuram M.G.Road, Cochin, Kerala
15	Matha Educational Trust	5, 2nd East Main Road, Gandhi Nagar, Vellore, Tamil Nadu
16	Maharashtra Centre for Entrepreneurship Development	A-38, M.I.D.C, Near Railway Station, Post Box No.546 Aurangabad - 431005, Maharashtra

Sl. No	Name of the Partner Institution	Address
17	MITCON Consultancy Services Ltd	Kubera Chambers, 1st Floor, Shivaji Nagar, Pune, Maharashtra
18	Participatory Rural Development Initiatives Society (PRDIS)	#230, Shivanagar Hyderguda P.O, Beside Donald High School, Hyderabad, Andhra Pradesh
19	Periyar Technology Business Incubator (PERIYAR TBI)	Periyar Maniammai University Periyar Nagar, Vallam, Thanjavur, Tamil Nadu
20	Swami Ramananda Thirtha Institute Of Rural Technology	Jalalpur (V), Bhoodhan Pochampally, Nalgonda, Andhra Pradesh
21	Suraj Foundation	Plot No. P61, MIDC, Kupwad Sangli, Maharashtra
22	The Institute of Entrepreneurship Development	5/1358, T.A.M.S. Colony, Ellakkampatti, Dharmapuri, Tamil Nadu
23	TIME Industrial and Entrepreneurship Development Institute	G-8,1155, Gajlata Arcade, Sykes Extension, Near Shahaji Law College, Kollhapur, Maharashtra
24	VIT University	Vellore Campus, Vellore, Tamil Nadu
25	Voluntary Association for People Service (VAPS)	39, Besant Road, Chokkikulam, Madurai - 625002 Tamil Nadu

3.7. TV9 coverage on EDPs/ESDPs/ToTs organised by ni-msme

3.7.1. Telugu Channel TV9, through its reporter Ms. Sharada visited ni-msme and shot a film on the infrastructure like class rooms, computer labs, library, etc., and interviewed faculty members and others. They have taken the video to enlighten the student community in the area of education and the role of **ni-msme** in this regard including self and wage employment opportunities provided to the students and entrepreneurs. . In this connection, Dr. G. P. Vallabh Reddy, Director (SED) had explained about the APEX programmes organised by the Institute in different trades. These programmes are sponsored by the Ministry of MSME, Govt. of India. He had also explained the selection process of the candidates, and highlighted how the programmes are different from the conventional programmes, adding the essence of skills which will enhance the overall efficiency of the students in the setting up of enterprises or get this good job opportunities.

3.7.2. Dr. C. Rani, Director (SEE) explained about the various schemes of the Ministries of Govt. of India specially encouraging and helping the unemployed youth by way of providing training through EDPs, ESDPs, and ToTs in different trades.

3.7.3. The Institute is organising these programmes without fee to encourage and impart skills to the unemployed youth to drive them towards self-employment or to find wage employment. **ni-msme** is also organising these programmes in association with partner institutions having the expertise in imparting skills. This scheme is sponsored by the Ministry of MSME. Prof. V. Vishwas Rao, Head, SENDOC & C-CIT explained about various programmes in the field of IT & ITES highlighting different trades in demand. After completion of the training programmes, the trainees can start their own ventures with low capital investment and can become freelancers. He briefly explained about the information services which help the enterprises and the budding entrepreneurs to enhance their knowledge for better implementation to develop their respective enterprises. The programme was telecast on 23 Jan 2012, and has helped in expanding the reach and increasing awareness about the institute.



CHAPTER – IV

ACTIVITIES OF THE INSTITUTE

4.1. NATIONAL PROGRAMMES

4.1.1. During the year, 91 national programmes were conducted by the Institute. As many as 4,572 officers/executives of different Ministries/Departments including educated youth had benefited from the programmes.

Sl. No	Description of Programme	No. of Progs.	No. of persons trained	Description of persons trained
For Ministries/Departments				
1.	Entrepreneurship Development Programmes in Food Processing (on behalf of Ministry of Food Processing Industries, Govt. of India)	25	757	Educated youth to motivate to become entrepreneurs in the States of: a) Tripura, (b) Assam, (c) Meghalaya, (d) Andhra Pradesh, (e) Tamilnadu, (f) Kerala, and (g) Karnataka
2.	Refresher Course on MSME Promotion for officials of Office of DC (MSME)	02	39	Officials of Office of the DC (MSME)
3.	Mid-Career Training Programme for officials of Office of DC (MSME)	02	45	Officials of Office of the DC (MSME)
4.	Refresher Course on MSME Promotion for Mid-level Officers of Office of DC (MSME)	02	26	Officials of Office of the DC (MSME)
5.	Training Programme on Udyami Mitras under RGUMY	01	25	Udyami Mitras
6.	Induction Programme on MSME Promotion for Officer-Trainees of IES (on behalf of Ministry of Finance)	01	12	IES Officer-Trainees
7.	SPMCIL Developing Skill & Talent in MSMEs	01	100	Employees of Govt. of India Mint, Hyderabad
8.	Faculty Development Programmes in Entrepreneurship Dev. (on behalf of DS&T)	06	148	Faculty of different colleges in Tamilnadu, Kerala and Karnataka
9.	Training Programme for Sales Personnel and Managers (on behalf of KVIC, Mumbai)	01	25	Sales personnel & managers of Departmental Sales Outlets of KVIC
10.	Training Programme on Vigilance	01	45	Officials of KVIC

Sl. No	Description of Programme	No. of Progs.	No. of persons trained	Description of persons trained
11.	Induction Programme for Executive Trainees	01	32	Executive Trainees of National Mineral Development Corporation (NMDC)
12.	Capacity Building Prog.(on behalf of DGE & T)	02	38	Principals & Senior Faculty Members of ITIs
13.	Programme on Cluster Development for APITCO, Govt. of Andhra Pradesh	01	22	Officials of APITCO, Government of Andhra Pradesh
14.	Training of Trainers for English Work Readiness & Computers for Deptt. of Rural Development, Govt. Of Andhra Pradesh	01	70	Executives of Rural Development Dept. of Govt. of Andhra Pradesh
15.	Programme for District Level Executives for Employment Generation & Marketing Mission (EGMM), Govt. of Andhra Pradesh	02	60	District Level Executives of Employment Generation & Marketing Mission, Govt. of Andhra Pradesh
16.	Engineering Consultants Induction Programme for Rural Development Dept., Govt. of A.P.	01	80	Engineering Consultants of Rural Development Dept., Govt. of A.P.
17.	Capacity Building Training Programme for Jobs Resource Persons for EGMM, Govt. of Andhra Pradesh	02	70	Jobs Resource Persons of Employment Generation & Marketing Mission, Govt. of Andhra Pradesh
18.	Induction Training on MSME Promotion for Govt. of Kerala	01	30	Industries Extension Officers of Government of Kerala
Total Ministries/Departments		53	1624	
Other programmes				
19.	29 programmes in different subjects	23	889	Officers/Executives of different organizations
20.	IT Programmes for educated youth for improvement of their skills	15	2059	
Total		91	4572	

4.2. SEMINARS AND WORKSHOPS

4.2.1. Forty-seven seminars and workshops were conducted during the year as against 71 during 2010-11. The Delegates attended numbered 4,705 as against 4,921 in 2010-11.

4.2.2. National Workshops in Food Processing: Guided by the philosophy of entrepreneurship, encouraged by the Ministry of Food Processing Industries (MoFPI) of the Govt. of India, **ni-msme** has come to be dynamically involved with promotion of entrepreneurship in the food processing sector. Four national workshops in Food Processing at different places in the country, sponsored by Ministry of Food Processing Industries, were conducted. These workshops were attended by 745 delegates including practising as well as potential entrepreneurs, representatives of industry associations, officials of the Industries Departments, scientists from food technology institutions, faculty of the Agriculture University, officials of the Commodity Boards, bank officers, representatives of NGOs, and students from the Food Craft Institutes, etc.

4.2.2.1. The workshops were designed with four technical sessions on the following themes: Current Status and Business Opportunities for Food Processing Sector; Effective Implementation of Government Policies and Programmes; and Action Plan for the Growth of Food Processing Sector.

4.2.2.2. Exhibitions of processed foods were organised to coincide with the workshops. Successful entrepreneurs, beneficiaries and food technology institutions/organisations had displayed their products in these exhibitions.

4.2.3. A 'Business Meet-cum-Exposure visit for Kenya delegates was undertaken during September 22-24, 2011. Eleven delegates attended this event.

4.2.4. Workshop on IPR and Management of IPRs on the eve of World IPR Day Celebrations for the benefit of enterprises was conducted on 20 April 11 at **ni-msme**. The workshop was sponsored by NABARD, SBH, Andhra Bank and Shri Ram Corporation. Mr. Uday Kumar, IAS, Secretary, Govt. of India, Ministry of MSME inaugurated the event. The objective of the workshop was to examine the current IPR scenario in the country to chalk out strategies to meet challenges thrown up by different sectors with special reference to MSMEs. The workshop served as a forum for owner-managers of the enterprises of MSME clusters, officers of industries, scientific research institutions, banks, laboratories, hospitals; and professionals like scientists, engineers, doctors, researchers, corporate/multinational executives, technologists, consultants and facilitators of IPR in India. The workshop had case study presentations on IPR adopted enterprises. 75 delegates representing Govt. officers, bankers, MSME entrepreneurs, NGOs, professors, scientists and doctors had attended the workshop.



4.3. INTERNATIONAL PROGRAMMES

4.3.1. As per the fellowships approved under ITEC/SCAAP and TCS of Colombo Plan to the executives of developing countries by the Ministry of External Affairs and Ministry of Food Processing Industries, Government of India, 24 programmes in five phases were conducted during the year, in which 412 executives had participated.

4.3.2. The first phase of five programmes of 12 weeks was from 8th August, 2011 and concluded on 28th October, 2011. The programmes were: (1) Communication Skills in English and Promotion of Micro, Small and Medium Enterprises (EPMSME), (2) Communication Skills in English and Promotion of Food Processing Enterprises for Women (EPPFW), (3) Communication Skills in English and Information Systems & Services for SMEs (EISSMEs), (4) Communication Skills in English and Information and Communications Technology for Business Promotion of SMEs



(EIBPSMEs), and (5) Communication Skills in English and Capacity Building for Providing Alternative Livelihood Opportunities for the Poor (ECBALO).

4.3.3. The second phase, was comprised of three programmes of 8 weeks duration each. They were conducted (from 5 September, 2011 to 28 October, 2011). The three programmes were: (1) Tourism and Hospitality Management (THM), (2) Innovative Strategies for SME Development (ISSD), and (3) Enterprise Development through Micro Finance (EDMF).

4.3.4. The third phase consisting of six programmes of 8 weeks duration each, was conducted from 14 November, 2011 to 06 January, 2012. The programmes were: (1) Empowerment of Women through Enterprises (EWE), (2) Intellectual Property Rights (IPRs) and Implications for SMEs (IPRIS), (3) Training Methods and Skills for Managers (TMSM), (4) SME Financing: Approaches and Strategies (SMEFAS), (5) Total Quality Management & ISO 9001:2008, 14001:2004, BS 7799 & Six Sigma (TQM), and (6) Planning and Promotion of Agro and Food Enterprises (PAFE). A special programme under TCS of Colombo Plan, i.e., Regional Perspective of Developing and Developed Countries Cooperation for SMEs was also conducted during 14 November, 2011 and 6 January, 2012.

4.3.5. Six programmes were inaugurated in the fourth phase by the Hon'ble Union Minister of MSME, Govt. of India, Mr. Virbhadra Singh on 23 January, 2012. The programmes were: (1) Promotion of Micro Enterprises (POME), (2) Micro Credit for Promotion of Sustainable SHG Livelihood (MPSL), (3) Tourism and Hospitality Management (THM), (4) Training of Trainers in Entrepreneurship and Skill Development (ToT-ESD), (5) Promotion of Financial Markets (PFM), and (6) Management Consultancy Services for SMEs (MCSS). These programmes were of 8 weeks duration (23 January to 16 March, 2012).

4.3.5.1. While the Hon'ble Minister was the Chief Guest, Mr. R.K. Mathur, IAS, Secretary to the Govt. of India, Ministry of MSME was the Guest of Honour of the event.. Mr. B.N. Nanda, IES, Economic Adviser, Ministry of MSME, Govt. of India; Mr. V.B. Gangurde, Joint Chief Executive Officer, KVIC; Dr. Dinesh Awasthi, Director, EDII; Mr S. V. G. Nandagopal, Chief General Manager, SIDBI and other dignitaries had also graced the function.

4.3.5.2. Apart from the delegates of the international programmes, the entire family of **ni-msme**, and the participants of the national programmes in progress, viz. Induction Training on MSME Promotion for Industries Extension Officers, sponsored by the Directorate of Industries & Commerce, Government of Kerala (21 Nov 2011- 10 Feb 2012); Refresher Course on MSME Promotion for Mid-Level Officers of the DC (MSME), sponsored by the office of the Development Commissioner (MSME), Govt. of India (16-27 Jan 2012); ESDPs (under the Scheme of Assistance to Training Institutions), sponsored by the Ministry of MSME, Govt. of India were also present at the inaugural function.

4.3.5.3. The Hon'ble Union Minister had initiated his address on a note of felicitation. He congratulated the faculty and staff of the Institute in its Golden Jubilee year, for their dedicated efforts through the decades, which have brought esteem and recognition to the Institute. Through this approach they have also been contributing to the development of the country. Since the Independence in 1947, India has made a long journey of progress in health and living conditions, literacy and education, science and technology, among others. With about 2.6 crore enterprises in the country, employing nearly 6 crore people, India's MSME sector is the major contributor to the economy in terms of production, employment, and exports, as well as in terms of number of units. More importantly, this sector is labour intensive and requires only small capital. Thus the sector has the potential to bridge the rural-urban disparity on the one hand and alleviate poverty through wider dispersal of its activities on the other. The sector envelops enterprises that range from the most traditional to the highly modern.

4.3.5.4. In view of the multiple merits of the sector, the Union Government has declared it as the priority sector for financing, and is sparing no effort for the growth of the sector. Among the many promotional measures are: the setting up of 100 tool-rooms all over the country, as against the present 10; and the obligatory 20% procurement for all government requirements from MSME products and services, of which Scheduled Castes/Scheduled Tribes owned units will be given preference. The Minister concluded his address by greeting the participants and guests.

4.3.5.5. Preceding the Hon'ble Union Minister's address, Mr. Mathur had stated that training interventions of this kind were an opportunity for mutual learning through experience sharing. He had praised the Institute employees for being a catalyst for entrepreneurship development in the country over the past half-century, and observed that it imparts that delicate Indian touch to its programmes by a judicious combination of the latest global practices with Indian innovations, thus justifying the message projected by its logo of the Buddha's *jnana mudra*. Taking into account the potential of the MSME sector for geographical spread and adoption by different segments of society, promotion of the sector in terms of growth in production and services was an absolute necessity to achieve the economic development of the country.

4.3.5.6. He called on the participants to use the knowledge gained during the training here for improving the conditions of their back-home situation. He had advised them to give feedback on their experiences in the process for improvement.

4.3.6. **ni-msme** had organised four special international programmes during February, 2012 and March, 2012. The two programmes were: (1) Entrepreneurship Development in Food Processing Sector for the Executives of Africa Region (27 February – 10 March 2012), and (2) ToT on Entrepreneurship Development in Food Processing Sector for the Executives of Africa Region (12 – 30 March 2012), sponsored by the Ministry of External Affairs (MEA), Govt. of India, under India-Africa Forum Summit (IAFS: 2011-12) and implemented by the Ministry of Food Processing Industries, and (2) Training of Trainers on Entrepreneurship Development for Women Trainers – Motivators (27 February – 16 March 2012), sponsored by the MEA, GoI, under TCS Colombo Plan. Regional Perspective of Developing and Developed Countries Cooperation for SMEs Competitiveness Marketing and Partnership (14 - 25 November 2011), Sponsored by The Ministry of External Affairs, Government of India under Technical Cooperation Scheme of Colombo Plan (TCS Co Plan).

4.4. RESEARCH AND CONSULTANCY PROJECTS

4.4.1. Evaluation Study of on-going Schemes of NBCFDC in Kerala and Karnataka States

4.4.1.1. National Backward Classes Financial Development Corporation (NBCFDC) is a Govt. of India undertaking under the Ministry of Social Justice and Empowerment. It promotes economic and developmental activities for the benefit of Backward Classes and to assist the poorer sections of these classes in skill development and self-employment ventures. NBCFDC provides financial assistance through State Canalizing Agencies (SCAs) nominated by the State Governments/UTs. NBCFDC also provides micro financing through SCAs/Self-Help Groups (SHGs).

4.4.1.2. In order to carry out the evaluation and identify the impact of the schemes, the NBCFDC awarded the projects for evaluating the schemes and make suitable and appropriate recommendations on the impact of the schemes.



4.4.2. Kerala Backward Classes Development Corporation, Thiruvananthapuram

4.4.2.1. Pursuant to the agreed terms and conditions of the evaluation study, five districts in Kerala (Thiruvananthapuram, Kollam, Thrissur, Malappuram, and Kannur) were selected for the study of the impact of the schemes, viz. Micro Finance Scheme, New Swarnima for Women Scheme and Direct Term Loan Scheme, administered by the Kerala Backward Castes Development Corporation (KBCDC). The time executing the study visited 105 villages in 32 blocks in the 5 districts, duly covering and interacting with occupational groups such as Auto-rickshaw drivers, Dairy and Cattle/Poultry Farm maintainers, Tailors, Catering/Snack centre owners, Small Hotel keepers, Beauty parlours, Handloom/Powerloom weavers, Vegetable vendors, Petty shop keepers, Provision Store owners, and Textile shop keepers.

4.4.2.2. The recommendations made to NBCFDC were:

- Selection of activities should largely be based on ground realities, i.e., need/demand based with proper counselling, giving weightage to their experience, and knowledge in their preferred activity for start-up.
- More publicity is to be given to schemes through media coverage to reach all the members of the backward classes.
- There was a need for training to upgrade the skills and motivate the beneficiaries in business management. Hence short term/certificate courses for willing members in different trades may be offered along with entrepreneurial development programmes before sanctioning the loans.
- It was suggested provide periodical training in their respective trades to the beneficiaries of on-going projects to excel in their trade.

- 22.77 % of beneficiaries did not engage in their project activity and utilized the loan as a mere low interest debt. In order to arrest such a tendency and protect the interests of the scheme it was suggested to formulate Clear-cut guidelines for grounding of units besides considering imposing penalties, strict actions against those beneficiaries, who were not running the activity, and plan to periodical inspection/checks at regular intervals.
- More women be encouraged to take up economic activities. This will help to bring about a total change in the family atmosphere as women were more potential to demonstrate greater responsiveness, commitment, savings and managing families, thus, changing the face of the community itself.
- To consider granting additional loans wherever necessary.
- To consider granting loans for further business development, on the basis of ground realities and demand-based to those beneficiaries, who settled their earlier loans.
- To consider avoiding granting inadequate loans.
- To implement the schemes in phased manner.
- While fixing targets, backwardness of the community should be taken as criteria rather than the population to promote more beneficiaries to minimize the regional disparities. More methods be adopted to bring out more beneficiaries in the areas like Malappuram District through awareness camps, seminars/ workshops to educate beneficiaries to be entrepreneur to take part in economic development.
- Constant monitoring is the key factor for success of any scheme. Thus adequate staff at field level be made available and make responsible to regularly monitor the activities of the beneficiaries.
- Training be imparted to the officials to improve their knowledge and upgrade skills for effective implementation of the schemes. Officers responsible for successful implementation of the schemes be given chance to visit and study similar schemes / activities in other parts of the country to exchange ideas, knowledge, etc.
- The new Green Card Incentive system announced by BCDC to the beneficiaries for making prompt repayment in time was mostly welcomed. The same be extended in the form of sanction of subsequent loan for Green Card holders, for expanding their activity of the beneficiaries.

4.4.2.3. Achievements in terms of assets creation & crossing below poverty line.

- Beneficiaries created assets at 60.67% of loan amount, giving assurance that their project activities would continue and they shall become successful entrepreneurs.
- The beneficiaries crossed Below Poverty Line (BPL) were 61.19%.

4.4.2. MATSYAFED Corporation, Thiruvananthapuram

4.4.3.1. Five districts of Kerala (Kollam, Alapuzha, Ernakulam, Kozhikode, and Kasargode) were taken up for the study. The study team visited 95 Villages in 28 blocks in the 5 Districts duly covering occupational groups of Fishermen Community engaged in traditional and non traditional trade activities, such as Fishing, Fish vending, Dry Fish, & Auto-rickshaw, Bakery, Beauty Parlor, Tailoring, Catering/Snack Centre, Vegetable vending, Petty shops, Provision Stores, etc.

4.4.3.2. Total 500 Units/households were covered and collected data from primary sources.

4.4.3.3. Recommendations made to NBCFDC & the MATSYAFED were:

- Selection of activities should largely be based on ground realities i.e. need-based demand with proper counseling giving weight-age to their experience, knowledge in their preferred activity to start.
- Need to impart training to upgrade skills and motivate beneficiaries in business management. To consider planning Short Term/ Certificate Courses for willing members in different trades along with Entrepreneurial Development Programme before granting loans.
- Periodical Training in their respective trades be provided to the beneficiaries of ongoing projects to excel in their trade.
- 4.20% of beneficiaries have not engaged in their project activity and utilized the loan as a mere low interested debt. To obviate such a tendency in the minds of beneficiaries' strict guidelines for grounding of units be evolved and followed vigorously. Penalties and stringent action be imposed on the beneficiaries who were not running the activity after obtaining the loan besides undertaking surprise checks at regular intervals.
- More women be encouraged to take up economic activities to bring about a total change in the family atmosphere as women have a higher potential to demonstrate greater responsiveness, commitment, savings and managing families and thus changing the face of the community itself.
- The MATSYAFED to examine and sanction additional loans wherever necessary.
- To encourage subsequent loans considering business development based on ground realities and demanded from the beneficiaries.
- Beneficiaries under fishing venture were to invest a huge amount to procure Fishing Craft and they were often faced with heavy losses with their fishing nets. During the non-season period of around 3 months, they had to struggle in paying due installments and penal interest resulting in failure in repayment. Some remedial measures need to be planned to obviate such problems by designing flexible repayment schedule besides considering subsidy on Fishing Nets, etc.
- To discontinue granting of inadequate loans and effective assessment of required of amount need to be taken up.
- Implementation of the schemes be planned in phased manner.
- While fixing targets, backwardness of the community should be taken as criteria rather than the population to promote more beneficiaries to minimize the regional disparities. More methods be adopted to bring out more beneficiaries through awareness camps, Seminars/Workshops to educate them to become entrepreneur to take part in economic development.
- Constant monitoring is the key factor for success of any scheme. Thus adequate staff at Cluster level be made available and made responsible monitoring the activities of the beneficiaries at regular intervals.

- Training be imparted to the officials to improve their knowledge and upgrade skills for effective implementation of the schemes they be deputed to visit and study similar schemes/activities in other parts of the country to exchange ideas, knowledge, etc.
- Incentive system be announced to the beneficiaries for making prompt repayment in time and extended in the form of sanction of second loan for expanding the activity on ground realities as required by the beneficiaries.

4.4.3.4. Achievements in terms of assets creation & crossing below poverty line:

- Beneficiaries created Assets at 133.98% of Loan amount, giving assurance that their project activities continue and they become successful entrepreneurs.
- Beneficiaries of BC community crossed Below Poverty Line (BPL) were 61%.

4.4.4. Evaluation of ongoing schemes of NBCFDC in Karnataka State

4.4.4.1. A laudable initiative taken by the Union government in the recent past for securing social justice for the lowly and downtrodden people belonging to a cross section of Government of India/State Government/ Union Territory notified Backward Classes inhabiting the countryside as well as the urban centers was one relating to provision of loans at concessional rates of interest to facilitate their being able to ground self-employment units/seek wage-employment ventures as individuals or groups of individuals (NGOs/SHGs) to earn their daily bread. For this purpose, the National Backward Classes Finance and Development Corporation (NBCFDC), New Delhi, an Undertaking of the Ministry of Social Justice and Empowerment, Government of India had formulated schemes such as Term Loan Scheme, Margin Money Loan Scheme, Micro Finance Scheme, New Swarnima for Women Scheme, Mahila Samridhhi Yojana Scheme, Swyam Saksham Scheme for professionals, New Aakanksha Scheme for granting education loans etc. implemented by the State Canalizing Agencies.

4.4.4.2. In order to study the impact and make suitable recommendations for improvement in implementation of the schemes executed through D.Devraj Urs Backward Classes Development Corporation in the state of Karnataka during the fiscal years 2007-08 thro 2009-10, **ni-msme** undertaken evaluation study. The team had covered four select districts of Karnataka and elicited the information from 500 beneficiaries.

4.4.4.3. Outcome of the study undertaken in the revenue districts of Bangalore Urban, Bangalore Rural, Ramnagara and Mangalore was that the NBCFDC-funded schemes came in handy for the hapless lot – notably a major chunk of the beneficiaries happening to be less literate, middle-aged women – to set up their own units, which over a period, not only picked up and were being run sustainable, devoted most to traditional occupations and services sector. In the process, apart from the beneficiaries being able to eke out their livelihood pursuing their chosen ventures they also could increase productivity and business turnover profitably resulting in much savings and many a beneficiaries being able to raise edifices (be they mud-and-thatch huts or tiny tenements) to have a shade over their heads apart from providing schooling and better quality of life to their families - a thing that was in line with the New Millennium Goals.

4.4.4.4. Nonetheless, there appear to exist some loose ends and it appears to be imperative to set things right. And, these relate to aspects such as (a) the SCA taking needed initiatives immediately for (a) engaging regular staff borne on the Corporations pay roll in all its 30 District Offices (b) to handle matters relating to implementation of state / national backward classes welfare schemes only and not those of the Minorities corporation also (c) building up proper Monitoring and Follow-up mechanisms (d) establish required infrastructure/Recovery Cell in each of its District Office to ensure less default cases emerging (e) having the loan amount sanctions hiked to an extent of double to what is obtaining during the study period in respect of each scheme so that the entrepreneurs would be in a position to have access to required working capital for competitively working alongside others in the marketplace, particularly because of existence of a sort of dog-eat-dog kind of market competition now-a-days.

4.4.4.5. All said and done, the fact remains that Karnataka is one state in south India that has clusters of lowly and down-trodden backward class communities inhabiting not only the countryside villages and hamlets but also in so-called camps that operate like communes. Hence the need for the NBCFDC to try and find ways of lending a better helping hand to these disadvantaged segments of the Karnataka society through sanction generously, of more funds year in and year out – as the state government do.

4.4.5. Evaluation and Certification of SETWIN and Bloomsoft Pvt. Ltd. trained candidates

4.4.5.1. Society for Employment Promotion and Training in Twin Cities (SETWIN) and Bloomsoft Pvt. Ltd., Hyderabad have been conducting placement linked skill development training programmes in different technical trades for the benefit of unemployed youth and also candidates who were looking for better job opportunities. All these training programmes were supported by Government of Andhra Pradesh through Rajiv Yuva Kiranalu Scheme to provide 15 lakh jobs by 2014 with the support of seven government departments of Andhra Pradesh. MEPMA is one among them to implement the scheme in urban slums. The training programmes are basically to convert school / college dropouts, unskilled and unemployed youth into productive workforce by building their skills thereby promoting inclusive growth.

4.4.5.2. **ni-msme** being the national institute of repute having experience in entrepreneurship promotion and development selected by SETWIN and Bloomsoft Pvt. Ltd. for evaluation and certification of their trainees. SETWIN through its 22 own training centers and 94 franchisees and Bloomsoft Pvt Ltd., its eight partner institutions have been conducting skill development trainings across the state of Andhra Pradesh. Execution of this project was got postponed to April, 2012 due to certain administrative reasons encountered.

4.4.6. Arts and Crafts Workshop (26 – 28 Jan 2012) was conducted by the Resource Centre for Traditional Paintings in Handicrafts (RCTP)

4.4.6.1 Rajiv Vidhya Mission under Sarva Siksha Abhiyaan had organised a 3-day workshop on Arts and Crafts for the students of Residential Special Training Schools run by the NGO's of Hyderabad and Ranga Reddy districts during 26 - 28 Jan 2012 at State Art Gallery, Madhapur, Hyderabad. RCTP of **ni-msme** used this event as a platform to introduce traditional paintings and their characteristics to the students who have participated in the workshop.

4.4.6.2. The Arts and Crafts workshop was to explore the creativity and displays in this stadium. The programme was inaugurated by Mr. Vatti Vasanth Kumar, Hon'ble Minister for Tourism and Culture; GoAP. Presidential address by Dr. Sailajanath, Hon'ble Minister, Primary Education; GoAP and Mrs. Chandana Kahn, Principal Secretary, Primary Education and Tourism Department, GoAP had delivered the keynote address.



4.4.6.3. Among the 300 students, who were given training in performing arts such as dance, music and puppetry besides the clay craft, paper sculpture, painting, collage work, etc., 30 students had been trained with the tips for painting the traditional paintings in the styles of Scroll Painting, Gond Painting, Warli Painting of Maharashtra besides Batik.



CHAPTER – V

USE OF OFFICIAL LANGUAGE

5.1. A Committee “Official Language Implementation Committee” was constituted for implementing use of Hindi in day-to-day official work. The first meeting of the Committee was held on 24th November, 2011. The issues relating to the implementation of official language were discussed and decisions were taken.

5.2. Under **Hindi Teaching Scheme** five employees of **ni-msme** were nominated in the month of Jun. 2011 to May, 2012 through for correspondence course commenced from June, 2011. The programme was scheduled to complete in May, 2012.

5.3. On 14 September, 2011 Hindi Day celebrations were observed during 13 – 16 September, 2011. Workshops and competitions for writing in Hindi were held. 14 employees took part in various Hindi competitions.

5.4. Under Hindi Teaching Scheme the Hindi Classes for Prabodh, Praveen and Pragya were commenced from 20th January, 2012. The Asst. Director Hindi Teaching Scheme, Government of India and Hindi Pradhyapak, Shri Ram Niwas from Hindi Teaching Scheme were extended their services. 25 employees on alternate days for 5 months were taking advantage of these classes.

5.5. On 17 February, 2012 Hindi Workshop on Policies & Rules of Official Language Act was conducted by Shri Ram Niwas, Hindi Pradhyapak of Hindi Teaching Scheme, Hyderabad for the benefit of employees of **ni-msme**.

VIGILANCE ACTIVITIES

6.1. Dr. C. Rani, Director i/c., School of Entrepreneurship and Extension was the part-time Chief Vigilance Officer of the Institute. She had attended to all the vigilance related activities.

6.2. In compliance with the orders of Central Vigilance Commissioner, GoI, New Delhi **ni-msme** observed Vigilance Awareness Week from 31 October, 2011 to 05 November, 2011 to convey a message that corruption is anti-national and anti-economic for development. All the employees who assembled opposite to the new training building at 11:00 am on 31 Oct 2011 and took a pledge to observe integrity and transparency to work for eradication of corruption, growth and reputation of the organisation in all spheres of activities. Prof. P. Udaya Shanker, Director General I/c administered the pledge in English and Hindi. Dr. G.P. Vallabh Reddy, Chief Administrative Officer coordinated the event.



**CITIZENS’ CHARTER AND RIGHT TO INFORMATION (RTI)
ACT**

7.1. CITIZENS’ CHARTER OF THE INSTITUTE

7.1.1. In the Result Framework Document (RFD), Sevottam Compliant Citizens’ Charter, as well as Sevittam Compliant Grievance Redress Mechanism have been mandatory. Accordingly, Citizens’ Charter for the Institute has been adopted and the same can be viewed at the Institute’s website.

7.1.2. The aim of the Institute is to offer and conduct training programmes/seminars and works for national and international executives, employees of all the MSME services providers; to undertake and execute research and consultancy projects for the development and promotion of enterprises; offering skill based training programmes in Information Technology to the educated youth for upgrading their skills; and to provide information relating to MSME to the citizens/clients.

7.1.3. VISION

A vibrant and Entrepreneurial Society.

7.1.4. MISSION

To facilitate the growth of entrepreneurship culture for development of MSMEs.

7.1.5. COMMITMENT

The Institute is committed to provide efficient assistance with transparency and courtesy to the citizens as well as to MSMEs.

The Institute maintains confidentialities of personal and business information disclosed to it by the stakeholders in conducting programmes/projects and review of policies.

7.1.6. GUIDANCE AND HELP

The information and facilitation counters are set up on three different counters of the Institute which are located, one in the ground floor of SENDOC building, second in the ground floor of New Training building and the third one in the ground floor of ‘F’ Block of the Guest Rooms of **ni-msme**.

Annual Reports and other publications, like, SME Policy, SME Technology, SEDME and monthly news bulletins are issued to provide information on the services of the Institute with clear transparency.

7.1.7. COMPLAINTS

Any complaints can be lodged at the Grievance Cell and information can be sought from the facilitation Counters. The addresses are indicated below:

Grievance Cell

Chief Administrative Officer
Ni-msme, Yousufguda
Hyderabad 500 045
Tel.No.040-23608544/Extn. 203
Fax No.040-23608547
Website: www.nimsme.org

Information and Facilitation Counters

1. Ground floor of SENDOC building, **ni-msme**
Tel.No.040-23608544/Extn.235
2. Ground floor of New Training building, **ni-msme**
Tel.No.040-23608544/Extn.217/260
3. Ground floor of 'F' Block of Guest Rooms, **ni-msme**
Tel. No.040-23608544/Extn.270/280

7.2. RIGHT TO INFORMATION (RTI) ACT

7.2.1. For information under the RTI Act, 205, citizens may approach the Public Information Officer (RTI) located in New Training Building (Ground Floor: Registrar's Office), **ni-msme**, Yousufguda, Hyderabad 500 045 on any working day. During the year 2011-12, 16 applications were received by the Institute, out of which 14 applications were accepted/replied.

Address of Public Information Officer

Assistant Registrar
RO's Office
ni-msme
Yousufguda
Hyderabad 500 045
Tel.No.040-23608544/Extn.270/280
Fax No.040-23608547

ANNEXURES

NATIONAL PROGRAMMES

	NAME OF PROGRAMME	VENUE	DURATION		TRAINESS
			TO	FROM	
	DC(MSME), M/o. MSME				
1	Refresher Course on MSME Promotion for officials of DC(MSME)		06.06.11	17.06.11	16
2	Mid Career Training Programme for officials of DC(MSME)		06.06.11	17.06.11	21
3	Refresher Course on MSME Promotion for officials of DC(MSME)		27.06.11	08.07.11	23
4	Mid Career Training Programme for officials of DC(MSME)		27.06.11	08.07.11	24
5	Refresher Course on MSME Promotion for		16.01.12	27.01.12	12
6	Refresher Course on MSME Promotion for		06.02.12	17.02.12	14
	TOTAL DC (MSME)				110
	M/o. MSME				
7	Prog on Udyami Mitras under RGUMY (MSME)MINISTRY OF FINANCE-DEA	ni-msme	19.04.11	21.04.11	25
8	Induction Programme on MSME Promotion for Officer-Trainees of IES, MINISTRY OF FINANCE		16.08.11	26.08.11	12
9	SPMCIL Developing Skill & Talent of MSME Employees of GoI Mint		01.11.11	02.11.11	100
	TOTAL M/o. FINANCE				112
	DEPTT. OF SCIENCE & TECHNOLOGY				
10	FDP at Madurai (DST)	Madurai	05.04.11	18.04.11	24
11	FDP at Karaikudi (DST)	Karaikudi	05.04.11	19.04.11	25
12	FDP at Madurai (DST)	Madurai	18.04.11	30.04.11	20
13	FDP at Cochin (DST)	Cochin	14.11.11	26.11.11	29
14	FDP at Bangalore (DST)	Bangalore	19.03.12	30.03.12	25
15	FDP at Bangalore (DST)	Bangalore	19.03.12	30.03.12	25
	TOTAL DST				148

	NAME OF PROGRAMME	VENUE	DURATION		TRAINESS
			TO	FROM	
MINISTRY OF FOOD PROCESSING INDUSTRIES					
16	EDP in Food Processing (M/o.FPI)-Tripura	Agarthala	18.04.11	28.05.11	31
17	EDP in Food Processing (M/o.FPI)-Tripura	Baldakhal	11.04.11	21.05.11	30
18	EDP in Food Processing (M/o.FPI)-Tripura	Ambassa	25.04.11	04.06.11	24
19	EDP in Food Processing (M/o.FPI)-Tripura	Dharmanagar	25.04.11	04.06.11	35
20	EDP in Food Processing (M/o.FPI)-Tripura	Khailashahar	25.04.11	04.06.11	31
21	EDP in Food Processing (M/o.FPI)-Assam	Guwahati	16.05.11	26.06.11	26
22	EDP in Food Processing (M/o.FPI)-Assam	Bongaigaon	16.05.11	25.06.11	31
23	EDP in Food Processing (M/o.FPI)-Assam	Tejpur	16.05.11	25.06.11	34
24	EDP in Food Processing (M/o.FPI)-Meghalaya	Nongstoin	16.05.11	25.06.11	33
25	EDP in Food Processing (AP-1)	Kakinada	29.10.11	10.12.11	30
26	EDP in Food Processing (AP-2)	Chittoor	14.11.11	24.12.11	30
27	EDP in Food Processing (AP-3)	M'nagar	21.11.11	31.12.11	30
28	EDP in Food Processing (AP-4)	Nellore	15.02.11	28.03.12	30
29	EDP in Food Processing (AP-5)	Khammam	21.02.12	31.03.12	30
30	EDP in Food Processing in Tamilnadu	Namakkal	30.01.12	10.03.12	30
31	EDP in Food Processing in Tamilnadu	Salem	06.02.12	17.03.12	30
32	EDP in Food Processing in Tamilnadu	Periyar	15.02.12	28.03.12	30
33	EDP in Food Processing in Tamilnadu	Tiruchirappally	16.02.12	29.03.12	30
34	EDP in Food Processing in Tamilnadu	Coimbatore	16.02.12	29.03.12	30
35	EDP in Food Processing in Kerala	Palakkad	15.02.12	28.03.12	30
36	EDP in Food Processing in Kerala	Malappuram	21.02.12	31.03.12	30
37	EDP in Food Processing in Kerala	Wynad	22.02.12	28.03.12	30
38	EDP in Food Processing in Kerala	Trissur	21.02.12	31.03.12	32
39	EDP in Food Processing in Karnataka	Chikbalapur	07.02.12	17.03.12	30
40	EDP in Food Processing in Karnataka	Gulbarga	13.02.12	24.03.12	30
	TOTAL M/o.FPI				757

	NAME OF PROGRAMME	VENUE	DURATION		TRAINESS
			TO	FROM	
	KVIC, M/o. MSME				
41	Training for the Sales Personnel & Managers of Deptl.Sales Outlets of KVIC		25.07.11	29.07.11	25
42	Programme on Vigilance for the Officers of KVIC		16.11.11	17.11.11	45
	TOTAL KVIC				70
	NMDC				
43	Induction prog for Executive Trainees of NMDC, DGE&T, M/o.LABOUR & EMPLOYMENT		27.07.11	02.08.11	32
44	Capacity Building Programme for Principals & senior faculty members of ITI (DGET)		12.09.11	17.09.11	21
45	Capacity Building Programme for Principals & senior faculty members of ITI (DGET)		26.09.11	01.10.11	17
	TOTAL DGE&T				38
	GOVT. OF ANDHRA PRADESH				
46	Pro.on Cluster Development for APITCO		04.07.11	06.07.11	22
47	ToT for English Work Readiness & Computers for Deptt.of Rural Dev., Govt. of A.P.		21.06.11	24.06.11	70
48	Prog.for District Level Executives of Employment Generation & Marketing Mission (EGMM), Govt. of A.P.		15.12.11	17.12.11	30
49	Prog.for District Level Executives of Employment Generation & Marketing Mission (EGMM), Govt. of A.P.		19.12.11	21.12.11	30
50	Engineering Consultants Induction Programme (Rural Dev.Deptt., A.P.)		29.02.12	05.03.12	80
51	Capacity Building Training Programme for Jobs Resource Persons for EGMM, Rural Dev. Deptt., Govt. of A.P.		26.03.12	28.03.12	35
52	Capacity Building Training Programme for Jobs Resource Persons for EGMM, Rural Dev. Deptt., Govt. of A.P.		26.03.12	28.03.12	35
	TOTAL GOVT. OF A.P.				302

	NAME OF PROGRAMME	VENUE	DURATION		TRAINESS
			TO	FROM	
	INDUSTRIES, GOVT. OF KERALA				
53	Induction Training on MSME Promotion for IEOs of Govt. of Kerala		21.11.11	10.02.12	30
	TOTAL MINISTRIES/DEPARTMENTS				1624
	OTHER PROGRAMMES				
54	Soft & Hard Interventions in MSME Clusters		08.08.11	10.08.11	6
55	Project Appraisal		22.08.11	26.08.11	10
56	Finance for Non-Finance Executives		07.11.11	11.11.11	8
57	Promotion of Micro Enterprises		14.11.11	18.11.11	8
58	Development of Agro Enterprises in Rural Areas		28.11.11	02.12.11	6
59	ToT in Entrepreneurship Dev. For Project Coordinators of Krishi Vignan Kendras (KVK)		19.12.11	23.12.11	1
60	Revitalisation of DICs		30.01.12	03.02.12	13
61	Training in Traditional Paintings of Handicrafts				6
62	Designers Training Programme	Barabanki			30
63	Designers Training Programme	Barabanki			30
64	Refresher Course for Electrical & Mechanical Engineers of NCC Ltd.		24.06.11	25.06.11	25
65	Orientation Prog.for Graduate/Diploma Engineers of NCC Ltd.		05.07.11	08.07.11	120
66	Orientation Prog.for Graduate/Diploma Engineers of NCC Ltd.		06.07.11		120
67	Orientation Prog.for Graduate/Diploma Engineers of NCC Ltd.		07.07.11		80
68	Orientation Prog.for Graduate/Diploma Engineers of NCC Ltd.		08.07.11		80
69	IT Program for William J Clinton Foundation		25.08.11	26.08.11	65
70	Roving programme by Faculty of STC, Oriental Bank of Commerce, Hyderabad		29.08.11	30.08.11	40
71	Roving Programme for Clerks of OBC		26.09.11		50

	NAME OF PROGRAMME	VENUE	DURATION		TRAINESS
			TO	FROM	
72	Roving Programme for Clerks of OBC		27.09.11		28
73	Programme for Heritage Foods		29.09.11		55
74	Training Prog. for HDFC		26.12.11	29.12.11	26
75	Roving Programme (for Clerks) for OBC, Hyderabad		26.03.12		47
76	Roving Programme (for Officers) for OBC, Hyderabad		27.03.12		35
	TOTAL OTHERS				889
	IT PROGRAMMES				
77	Certificate Course in Embedded Systesm-I		06.06.11	06.10.11	31
78	Mini Projects for B.Tech students-I		06.06.11	06.07.11	93
79	Mini Projects for B.Tech students-II		06.07.11	06.08.11	12
80	Certificate Course in Embedded Systesm-II		11.07.11	11.11.11	14
81	Certificate Course in Embedded Systesm-III		21.09.12	21.01.12	12
82	B.Tech (ECE)		05.12.11	31.03.12	510
83	B.Tech (EEE)				207
84	B.Tech (CSE)				335
85	B.Tech (IT)				296
86	MCA				72
87	B.Tech (CSE)		02.01.12	30.03.12	193
88	B.Tech (ECE)		02.01.12	30.03.12	103
89	B.Tech (IT)		02.01.12	30.03.12	115
90	B.Tech (EEE)		02.01.12	30.03.12	62
91	B.Tech. (EIE)		02.01.12	30.03.12	4
	TOTAL IT PROGRAMMES				2059
	GRAND TOTAL				4572

SEMINARS AND WORKSHOPS

	NAME OF PROGRAMME	VENUE	DURATION		TRAINESS
			TO	FROM	
	M/o.FPI				
1	W/S on Food Processing (MoFPI)	Cochin	15.12.11		170
2	W/S on Food Processing (MoFPI)	Thanjavur	16.02.12		150
3	W/S on Food Processing (MoFPI)	Dharmapuri	20.03.12		225
4	W/S on Food Processing (MoFPI)	Vizag	31.03.12		200
	TOTAL M/o.FPI				745
	DC (HANDICRAFTS)				
5	Regional Review Workshop of Southern Region under AHVY (DC, Handicrafts)		24.05.11	25.05.11	120
	OTHERS				
6	W/S on Protection & Management of IPRs among Enterprises (sponsored by Andhra Bank, SBH, NABARD & M/s.Sri Ram Corpn.)		20.04.11		75
7	II Qrtly.Review Meet with CMOs of CRMA		20.04.11	21.04.11	22
8	CRR Campaign	Bangalore			120
9	CRR Campaign	Vizag			120
10	CRR Campaign	Cochin			120
11	CRR Campaign				136
12	ESDPs in IT Follow up workshop		30.06.11		66
13	W/S on Dev.of Herbal Health Clusters		05.07.11		12
14	Business Meet-cum-Exposure visit for Kenya Delegates		22.09.11	24.09.11	11
15	Review Workshop on 2010-11 Apex Programs		13.12.11		30
16	Workshop on Arts & Crafts		26.01.12	28.01.12	120
17	W/S on Livelihood Promotion & Skill Development Strategies for Mission Mode Approach				

	NAME OF PROGRAMME	VENUE	DURATION		TRAINESS
			TO	FROM	
18	Inagurual function of Hindi Teaching Scheme		20.01.12		55
19	Review Workshop on PI programmes		30.01.12		40
20	Review Workshop on APEX programmes		01.02.12		40
21	Awareness & Motivation Campaign for ESDP Training		06.02.12		150
22	Meet on Evaluation of ESDPs by JPS Associates		10.02.12		20
23	Bankers Meet for ESDP (WAWWD)		27.02.12		90
24	Bankers Meet for ESDP (WAWWD)		16.03.12		90
25	Bankers Meet for ESDP (CCIT)		19.03.12	20.03.12	300
26	Bankers Meet for ESDP (CCIT)		21.03.12	22.03.12	300
27	Bankers Meet for ESDP (CCIT)		27.03.12	28.03.12	300
28	Bankers Meet for ESDP (CCIT)		29.03.12	30.03.12	300
29	W/S on Product Process Improvement (KVIC)	ni-msme	31.03.11	14.04.11	20
30	W/S on National Child Rights for CRY		22.6.11	24.6.11	45
31	South India Partners Meet of M/o.Chatana Society, Hyderabad		29.06.11	01.07.11	25
32	W/S for Aide at Action		02.07.11	06.07.11	55
33	W/S on Balasahayoga Transition and Strategy Plan (Family Health International, Hyderabad)		12.07.11		80
34	National Deaf Women's Seminar		30.07.11	31.07.11	145
35	Workshop on B2B for Aide et Action		02.08.11	06.08.11	31
36	Workshop for Aide et Action		25.08.11	27.08.11	47
37	State Level Workshop on School Mapping at Secondary Level (RMSA), Hyderabad		11.11.11	13.11.11	50
38	Workshop on E-Waste Management (Toxic Link)		24.11.11		110
39	Scope of Management Graduates in Various Sectors for Kohinoor Business School, Mumbai		09.12.11		145
40	State Level Workshop on School Mapping at Secondary Level (RMSA), Hyderabad		20.12.11	21.12.11	140

	NAME OF PROGRAMME	VENUE	DURATION		TRAINESS
			TO	FROM	
41	State Level Workshop on Preparation of Training Modules Secondary Level (Social Studies) (RMSA), Hyderabad		23.12.11	27.12.11	38
42	State Level Workshop on Preparation of Training Modules Secondary Level (Maths & S.Sciences) (RMSA), Hyderabad		23.12.11	27.12.11	40
43	State Level Workshop on Preparation of Training Modules Secondary Level (English & Telugu) (RMSA), Hyderabad		23.12.11	27.12.11	40
44	APLLG Workshop: APMAS, Hyderabad		27.12.11		25
45	Interstate Annual Workshop for DE Coordinators for American India Foundation, New Delhi		19.03.12	21.03.12	80
46	Internal Auditors Meeting for Heritage Foods		28.03.12		55
47	Senior Executives Meeting for Heritage Foods		29.03.12	30.03.12	52
TOTAL OTHERS					3840
TOTAL SEMINARS AND WORKSHOPS					4705

INTERNATIONAL PROGRAMMES

	NAME OF PROGRAMME	VENUE	DURATION		TRAINESS
			TO	FROM	
1	Communication Skills in English and Promotion of MSMEs (EPMSMEs)		08.08.11	28.10.11	19
2	Communication Skills in English and Promotion of Food Processing Enterprises for Women (EPFPW)		08.08.11	28.10.11	13
3	Communication Skills in English and information Systems & Services for SMEs (EISSMEs)		08.08.11	28.10.11	14
4	Communication Skills in English and information and Communications Technology for Business Promotion of SMEs (EIBPSMEs)		08.08.11	28.10.11	12
5	Communication Skills in English and Capacity Building for providing Alternative Livelihood Opportunities for the Poor (ECBALO)		08.08.11	28.10.11	11

	NAME OF PROGRAMME	VENUE	DURATION		TRAINESS
			TO	FROM	
6	Tourism and Hospitality Management (THM)		05.09.11	28.10.11	27
7	Innovative Strategies for SME Development (ISSD)		05.09.11	28.10.11	19
8	Enterprise Development through Micro Finance (EDMF)		05.09.11	28.10.11	14
9	Empowerment of Women through Enterprises (EWE)		14.11.11	06.01.12	16
10	Intellectual Property Rights & Implications for SMEs (IPRIS)		14.11.11	06.01.12	12
11	Training Methods & Skills for Managements (TMSM)		14.11.11	06.01.12	30
12	SME Financing: Approaches & Strategies (SMEFAS)		14.11.11	06.01.12	13
13	TQM & ISO 9001:2008, 14001:2004, & Six Sigma (TQM)		14.11.11	06.01.12	29
14	Planning & Promotion of Agro & Food Enterprises (PAFE)		14.11.11	06.01.12	20
15	Regional Perspective of Developing & Developed Countries Coop.for SMEs Competitiveness, Marketing and Partnership (TCS sponsored)		14.11.11	25.11.11	10
16	Promotion of Micro Enterprises (POME)		23.01.12	16.03.12	22
17	Promotion of Financial Markets (PFM)		23.01.12	16.03.12	20
18	ToT in Entrepreneurship & SD (ToT-ESD)		23.01.12	16.03.12	15
19	Micro Credit for Promotion of Sustainable SHG Livelihood (MPSL)		23.01.12	16.03.12	15
20	Management Consultancy Services for SMEs(MCSS)		23.01.12	16.03.12	17
21	Tourism and Hospitality Management (THM)		23.01.12	16.03.12	33
22	ToT on Entrepreneurship Development for Women Trainers-Motivators: sponsored under TCS Co-Plan)		27.02.12	16.03.12	15
23	Entrepreneurship Development in Food Processing Sector for Executives of Africa Region: sponsored by MEA & MoFPI under India-Africa Forum Summit (IAFS)		27.02.12	10.03.12	9
24	Training of Trainers on Entrepreneurship Development in Food Processing Sector (IAFS)		12.03.12	30.03.12	7
	TOTAL INTERNATIONAL PROGRAMMES				412

RESEARCH AND CONSULTANCY

Sl. No	NAME OF THE PROJECT
1	DEVELOPMENT OF HANDLOOM CLUSTER AT MUBARAKPUR, U.P.
2	DEVELOPMENT OF HANDLOOM CLUSTER AT BARABANKI, U.P.
3	INTELLECTUAL PROPERTY RIGHTS FACILITATION CENTRE (IPFC)
4	SETTING UP OF MICRO-BUSINESS CENTRES (UPA)
5	RESOURCE CENTRE FOR TRADITIONAL PAINTINGS SPONSORED BY DEVELOPMENT COMMISSIONER (HANDICRAFTS)
6 to 42	CLUSTER RESOURCE-CUM-MONITORING AGENCY FOR 37 CLUSTERS IN AP
43 to 66	CLUSTER RESOURCE-CUM-MONITORING AGENCY FOR 24 CLUSTERS IN KERALA
67	DIAGNOSTIC STUDY ON LANGUISHING CRAFTS: CHERIYAL PAINTING, A.P.
68	DIAGNOSTIC STUDY ON LANGUISHING CRAFTS: RAJA RANI DOLLS, TIRUPATI.
69	DIAGNOSTIC SURVEY OF THREE HERBAL-HEALTH & COSMETIC CLUSTERS:(1) RATNAGIRI (MAHARASHTRA), (2) PAUBIDARI (KARNATAKA) AND(3) TRISSUR (KERALA) AND PREPARATION OF DPR
70	PREPARATION OF A FILM ON KVIC CLUSTERS
71	EVALUATION STUDY OF ON-GOING SCHEMES OF NBCFDC IN KERALA (NOTIFIED BACKWARD COMMUNITIES)
72	EVALUATION STUDY OF ON-GOING SCHEMES OF NBCFDC IN KERALA (FISHERIES)
73	EVALUATION STUDY OF ON-GOING SCHEMES OF NBCFDC IN KARNATAKA
74	SURVEY OF TEXTILE & APPAREL MANUFACTURING CLUSTERS DEVELOPMENT AT SOLAPUR, MALEGAON AND BHIWANDI IN MAHARASHTRA SPONSORED BY MAHARASHTRA STATE MINORITIES COMMISSION, MUMBAI

Performance indicators since inception (1962 – 2012)

Year	Training		Research & Consultancy No. of Projects	Educational	
	No. of Programmes	No. of Participants		No. of Programmes	No. of Students
1962-63	3	80	1		
1963-64	6	159	2		
1964-65	9	223	1		
1965-66	12	199	1		
1966-67	14	189	6		
1967-68	15	186	6		
1968-69	14	156	6		
1969-70	14	314	4		
1970-71	22	313	12		
1971-72	23	394	12		
1972-73	39	881	17		
1973-74	45	1932	14		
1974-75	42	2078	4		
1975-76	61	1666	14		
1976-77	76	1319	15		
1977-78	103	1634	19		
1978-79	62	1324	10		
1979-80	79	1189	11		
1980-81	63	1234	13		
1981-82	59	1199	14		
1982-83	92	1426	9		
1983-84	78	995	13		
1984-85	70	987	16		
1985-86	66	1158	22		
1986-87	97	1772	18		
1987-88	85	1484	16		

Year	Training		Research & Consultancy	Educational	
	No. of Programmes	No. of Participants	No. of Projects	No. of Programmes	No. of Students
1988-89	86	1397	9		
1989-90	92	1515	6		
1990-91	61	1254	7		
1991-92	114	1358	6		
1992-93	110	1938	4		
1993-94	113	2011	3		
1994-95	57	715	2		
1995-96	42	756	6		
1996-97	66	1141	5		
1997-98	88	1597	11		
1998-99	559	23094	9	1	7
1999-00	238	8257	9	26	853
2000-01	164	4687	14	33	1216
2001-02	164	4740	11	45	1192
2002-03	382	16592	23	33	809
2003-04	611	37434	33	32	619
2004-05	241	7948	20	39	834
2005-06	242	9014	23	37	626
2006-07	213	6852	21	21	383
2007-08	157	5312	47	11	276
2008-09	187	8799	68	23	79
2009-10	215	10702	76	14	863
2010-11	676	22242	91		
2011-12	698	25079	74		
TOTAL	6825	228925	854	315	7757

Alumni of Participants of International Programmes

Sl. No	Country	Trained	Sl. No	Country	Trained
1.	Afghanistan	370	29.	Czech, Republic	02
2.	Algeria	15	30.	Dominica	02
3.	Antigua and Barbuda	13	31.	Dominican Republic	01
4.	Angola	04	32.	Ecuador	13
5.	Armenia	23	33.	Egypt, Arab Rep. of	96
6.	Bangladesh	411	34.	El Salvador	13
7.	Barbados	12	35.	Eritrea	02
8.	Belarus	04	36.	Estonia	02
9.	Belize	10	37.	Ethiopia	170
10.	Benin	08	38.	Fiji	44
11.	Bhutan	79	39.	Gabon	01
12.	Bolivia	02	40.	Gambia, The	30
13.	Botswana	37	41.	Georgia	13
14.	Brazil	06	42.	Ghana	323
15.	Brunei	05	43.	Greece	01
16.	Bulgaria	01	44.	Guatemala	08
17.	Burkina Faso	11	45.	Guinea	08
18.	Burundi	06	46.	Guyana	64
19.	Cambodia	84	47.	Honduras	03
20.	Cameroon	05	48.	India	03
21.	Cape Verde	01	49.	Indonesia	161
22.	Chile	06	50.	Iran, Islamic Rep. of	56
23.	China	02	51.	Iraq	160
24.	Colombia	03	52.	Jamaica	05
25.	Costa Rica	15	53.	Japan	01
26.	Cote D'Ivoire (Ivory Cost)	29	54.	Jordan	59
27.	Croatia	01	55.	Kazakhstan	136
28.	Cuba	15	56.	Kenya	181

Sl. No	Country	Trained	Sl. No	Country	Trained
57.	Kiribati, Rep. of	03	86.	Panama	10
58.	Korea	28	87.	Papua New Guinea	41
59.	Kyrgyzstan	43	88.	Paraguay	02
60.	Lao PDR	67	89.	Peru	04
61.	Lesotho	20	90.	Philippines, The	233
62.	Liberia	28	91.	Poland	02
63.	Libya	04	92.	Romania	03
64.	Lithuania	08	93.	Russia	70
65.	Macedonia	03	94.	Rwanda	12
66.	Madagascar	47	95.	Samoa	12
67.	Malawi	139	96.	Saudi Arabia	02
68.	Malaysia	193	97.	Senegal	32
69.	Maldives	71	98.	Seychelles	14
70.	Mali	02	99.	Sierra Leone	110
71.	Malta	05	100.	Singapore	05
72.	Mauritius	144	101.	Solomon Islands	25
73.	Mexico	19	102.	Somalia	11
74.	Mongolia	46	103.	South Africa	89
75.	Morocco	17	104.	Sri Lanka	442
76.	Mozambique	11	105.	St. Kitts & Nevis (WI)	01
77.	Myanmar	223	106.	St. Lucia (WI)	08
78.	Namibia	27	107.	St. Vincent (WI)	02
79.	Nepal	138	108.	Sudan	270
80.	Nicaragua	10	109.	Suriname	23
81.	Niger	07	110.	Swaziland	20
82.	Nigeria	273	111.	Syrian Arab Rep.	122
83.	Oman	83	112.	Tajikistan	34
84.	Pakistan	04	113.	Tanzania	284
85.	Palestine	18	114.	Thailand	158

Sl. No	Country	Trained
115.	Timor Leste	02
116.	Togo	05
117.	Tonga	07
118.	Trinidad & Tobago	24
119.	Tunisia	06
120.	Turkey	18
121.	Turkmenistan	06
122.	Tuvalu	01
123.	Uganda	341
124.	United Arab Emirates	01
125.	Ukraine	06
126.	USA	15
127.	Uzbekistan	122
128.	Vanuatu	02
129.	Venezuela	05
130.	Vietnam	110
131.	Yemen	118
132.	Zaire (Democratic Republic of Congo)	11
133.	Zambia	183
134.	Zimbabwe	118
	Total:	7559

FINANCIAL STATEMENTS

Satyanarayana & Co.
CHARTERED ACCOUNTANTS

5-5-88/5, AMAR MANSION,
RANIGUNJ, SECUNDERABAD-500003

PHONES OFF: 277 18 992
277 15 028
66339972

FAX: 040 - 277 14 8i4

G. SATYANARAYANA RES: 278 00 479

J. JAGANNADHA RAO RES: 277 65195

CH. SESHAGIRI RAO RES: 278 41 166

G. VENKATARATNAM RES: 278 00 569

E-MAIL: satco@Sol.netin

Auditors' Report

To
The Director General,
National Institute for Micro ,Small and
Medium Enterprises
(formerly known as NISIET)
Hyderabad- 500045

1. We have audited the attached Balance Sheet of National Institute for Micro ,Small and Medium Enterprises (Nimsme) formerly known as NISIET , Hyderabad as at March 31, 2012, and the Income and Expenditure Account for the year ended on that date annexed thereto. These financial statements are the responsibility of the Society's management. Our responsibility is to express an opinion on these financial statements based on our audit.
2. We conducted our audit in accordance with the auditing standards generally accepted in India. Those Standards require that we plan and perform the audit to obtain reasonable assurance about whether the financial statements are free from material misstatements. An audit includes examining, on a test basis, evidence supporting the amounts and disclosures in the financial statements. An audit also includes assessing the accounting principles used and significant estimates made by the management, as well as evaluating the overall financial statement presentation. We believe that our audit provides a reasonable basis for our opinion.
3. Our comments on the financial statements for the year are as under:
 - a) Balances appearing under debtors, creditors, advance received / paid are subject to confirmation / reconciliation and consequential adjustments, the impact of which on these financial statements IS not quantifiable by us.
 - b) Reference is invited to Note 4 of Schedule 25 regarding demand from Commissioner of Customs, Central Excise and Service Tax for Rs 388.04 lacs towards payment of Service tax for the period 2004-2005 to 2008-2009 and an equivalent amount of penalty levied. Also a show cause notice was issued for the year 2009- 2010 towards payment of service of an amount of Rs 77.82 lacs. The Institute has filed an appeal before the Customs, Excise & Service Tax Appellate Tribunal, South bench Bangalore. We are not in a position to comment on the ultimate liability that may arise at a later date and its impact on the financial statements.

Satyanarayana & Co.
CHARTERED ACCOUNTANTS

5-5-88/5, AMAR MANSION,
RANIGUNJ, SECUNDERABAD-500003

PHONES OFF: 277 18 992
277 15 028
66339972

FAX: 040 - 277 14 8i4

G. SATYANARAYANA RES: 278 00 479
J. JAGANNADHA RAO RES: 277 65195
CH. SESHAGIRI RAO RES: 278 41 166
G. VENKATARATNAM RES: 278 00 569
E-MAIL: satco@Sol.netin

:: 2 ::

- c) Internal controls are required to be strengthened in respect of programmes which are conducted by outside agencies on behalf of Ni-msme, particularly IT programmes where fee is collected in cash by those agencies and remitted to the Institute.

Also the scope of Internal Audit coverage needs to be enhanced in view of increase in activities of the Institute, particularly in areas of expenditure incurred on various programmes.

- d) According to the information and explanations given to us, Physical verification of the assets of the Institute was not carried out during the year. The Institute has also not updated the Fixed asset register .In the absence of the above information, we are not in a position to comment on the differences/ discrepancies and their impact on these statements.

- e) Reference is invited to Note 2 of schedule 25 regarding non provision for Gratuity and Encashment of Earn Leave for the period from the inception of the institute to 31st March 1988 in the account, the impact of which on the financial statements is not ascertainable in the absence of information.

4. Subject to our comments given in paragraph 3 above, we report that:

- a) We have obtained all the information and explanations, which to the best of our knowledge and belief were necessary for the purpose of our audit.
- b) In our opinion proper books of account as required by law have been kept by the Society so far as appears from our examination of such books.
- c) The Balance Sheet and Income and Expenditure account dealt with by this report are in agreement with the books of account.
- d) In our opinion and to the best of our information and according to the explanations given to us, the said accounts read together with the Accounting Policies and Notes forming part of the accounts and subject to comments given in paragraph 3 above, the cumulative impact of which is not quantifiable, give a true and fair view in conformity with the accounting principles generally accepted in India:
- (i) In the case of the Balance Sheet, of the affairs of the Society as at March 31, 2012;
- (ii) In the case of the Income and Expenditure, of the Income for the year ended on that date.
- (iii) In the case of Cash Flow Statement, of the cash flows for the year ended on that date.

Place: Secunderabad
Date: 21-09-2012

For Satyanarayana & Co.,
Chartered Accountants
(Firm Registration No.S-3680)

Sd/-
J. Jagannadha Rao
Partner
Membership No.06239
ni-msme, Hyderabad

NATIONAL INSTITUTE FOR MICRO, SMALL AND MEDIUM ENTERPRISES
YOUSUFGUDA, HYDERABD 500 045
BALANCE SHEET AS AT 31st MARCH 2012

(Amount in ₹)

DESCRIPTION	Schedule	2011-12	2010-11
<u>CORPUS/CAPITAL FUND AND LIABILITIES</u>			
CORPUS / CAPITAL FUND	1	61165535	61165535
RESERVES AND SURPLUS	2	48971361	27277930
EARMARKED / ENDOWMENT FUNDS	3	9576744	19711438
SECURED LOANS AND BORROWINGS	4	0	0
UNSECURED LOANS AND BORROWINGS	5	10125	10125
DEFERRED CREDIT LIABILITIES	6	0	0
CURRENT LIABILITIES AND PROVISIONS	7	36105731	41686324
TOTAL		155829496	149851352
<u>ASSETS</u>			
FIXED ASSETS	8	20892775	19041608
INVESTMENTS-EARMARKED/ENDOW- MENT FUNDS	9	0	0
INVESTMENTS - OTHERS	10	0	0
CURRENT ASSETS, LOANS, ADVANCES	11	134936721	130809744
MISCELLANEOUS EXPENDITURE (to the extent not written off or adjusted)			0
TOTAL		155829496	149851352
SIGNIFICANT ACCOUNTING POLICIES	24		
NOTES TO ACCOUNTS	25		

Sd/-
Admn. & Accounts Officer

Sd/-
Chief Administrative Officer

Sd/-
Director General.

As per our report of even date
For Satyanarayana & Co.,
Chartered Accountants
(Firm Regn.No.S-3680)

Place: Hyderabad
Date: 21.09.2012

Sd/-
J. Jagannadha Rao
Partner
Membership No.06239

NATIONAL INSTITUTE FOR MICRO, SMALL AND MEDIUM ENTERPRISES
YOUSUFGUDA, HYDERABD 500 045
INCOME AND EXPENDITURE ACCOUNT FOR THE YEAR ENDED 31st MARCH 2012
(Amount in ₹)

DESCRIPTION	Schedule	2011-12	2010-11
(A) INCOME			
Income from Sales / Services	12	0	0
Grants / Subsidies	13	196172317	186089539
Fees / Subscriptions	14	14186373	12607920
Income from Investments	15	0	0
(Income from Investments from earmarked/ endowment funds transferred to /Funds)			
Income from Royalty, Publications, etc.	16	1162268	2069553
Interest Earned	17	5127907	4035605
Other Income	18	159543	341025
Increase/(decrease) in stock of finished goods and works-in-progress)	19	0	0
Total (A)		216808408	205143642
(B) EXPENDITURE			
Establishment Expenses	20	44814899	51200897
Other Administrative Expenses, etc.	21	148069135	131769828
Expenditure on Grants, Subsidies, etc.	22	0	0
Interest/Bsnk charges	23	32614	32262
Depreciation (Net Total at the year-end- corresponding to Schedule 8)		1878849	1840902
Total (B)		194795497	184843889
Balance being excess of Income over Expenditure (A-B)		22012911	20299753
Add: Prior period income/(-) Expenditure		-319480	105501
Net income		21693431	20405254
Transfer to Special Reserve (Specify each)		0	0
Transfer to General Reserve		21693431	20405254
Transfer to Capital Fund		0	0
Significant Accounting Policies	24		
Notes To Accounts	25		

<p style="text-align: center;">Sd/- Admn.& Accounts Officer</p>	<p style="text-align: center;">Sd/- Chief Administrative Officer</p>	<p style="text-align: center;">Sd/- Director General . As per our report of even date For Satyanarayana & Co., Chartered Accountants (Firm Regn.No.S-3680)</p>
<p>Place: Hyderabad</p> <p>Date: 21.09.2012</p>		<p style="text-align: center;">Sd/- J. Jagannadha Rao Partner Membership No.06239</p>

SCHEDULES FORMING PART OF BALANCE SHEET AS AT 31st MARCH 2012

(Amount - Rs.)

		2011-12		2010-11		
SCHEDULE 1 - CORPUS / CAPITAL FUND:						
Balance as at the beginning of the year		61165535		61165535		
Add: Contributions towards Corpus / Capital Fund						
Add/(Deduct): Balance of net income/(expenditure) transferred from the Income and Expenditure Account	0	61165535	0	61165535		
BALANCE AS AT THE YEAR - END		61165535		61165535		
SCHEDULE 2 - RESERVES AND SURPLUS:						
1. Capital Reserve:						
As per last Account		783139		783139		
Addition during the year				0		
Less: Deductions during the year			783139	0	783139	
2. Revaluation Reserve:						
As per last Account				0		
Addition during the year				0		
Less: Deductions during the year				0	0	
3. Special Reserves:						
As per last Account		1248585		1248585		
Addition during the year		0		0		
Less: Deductions during the year		0	1248585	0	1248585	
4. General Reserve:						
As per last Account		25246206		4840952		
Addition/Less: Addition during the year		21693431		20405254		
				46939637	25246206	
TOTAL		48971361			27277930	
SCHEDULE 3 - EARMARKED / ENDOWMENT FUNDS						
FUND-WISE BREAK UP						
		2011-12				2010-11
		Capital	Recurring	Activities	Total	
a) Opening balance of the funds		14601191	0	5110247	19711438	3423790
b) Additions to the funds:						
i. Grants from Ministries for Activities		0	0	166660259	166660259	168447854
ii. Grants from Ministry of MSME		0	0	0		19636000
iii. Income from investments made		0	0	0	0	0
iv. Other additions: Grants due Ministries		63960	0	28270931	28334891	25549803
TOTAL (a+b)		14665151	0	200041437	214706588	217057447
c) Utilisation / Expenditure towards objectives of funds						
i. Capital Expenditure						
Fixed Assets: Training Building Interiors		5829832	0	0	5829832	0
- IPFC (DC(MSME) Project		0	0	0	0	2517531
- RCTP (DC(Handicrafts) Project		423735	0	0	423735	40939
- CRMA (DC(Handloms) Project		63960	0	0	63960	
- Addl. floor over D, E & F Blocks		2640000	0	0	2640000	8698000
Total c(i)		8957527	0	0	8957527	11256470
ii. Revenue Expenditure						
- Programmes & projects		0	0	196172317	196172317	186089539
Total c(ii)		0	0	196172317	196172317	186089539
TOTAL (c)		8957527	0	196172317	205129844	197346009
NET BALANCE AS AT THE YEAR-END (a+b+c)		5707624	0	3869120	9576744	19711438

SCHEDULES FORMING PART OF BALANCE SHEET AS AT 31st MARCH 2012

(Amount - Rs.)

	2011-12		2010-11	
SCHEDULE 4 - SECURED LOANS AND BORROWINGS:				0
1. Central Government				0
2. State Government (Specify)				
3. Financial Institutions				
a. Term Loans			0	
- Interest accrued and due			0	
b. Other Loans (Specify)			0	
- Interest accrued and due			0	0
4. Other Institutions and Agencies				0
5. Debentures and Bonds				0
6. Others (Specify)				0
TOTAL		0		0
SCHEDULE 5 - UNSECURED LOANS AND BORROWINGS:				
1. Central Government		10125		10125
2. State Government (Specify)				0
3. Financial Institutions				0
4. Banks:				
a. Term Loans				0
b. Other Loans (Specify)				0
5. Other Institutions and Agencies				0
6. Debentures and Bonds				0
7. Others (Specify)				0
TOTAL		10125		10125
SCHEDULE 6 - DEFERRED CREDIT LIABILITIES:				
a) Acceptances secured by hypothecation of capital equipment and other assets		0		0
b) Others		0		0
TOTAL		0		0
SCHEDULE 7 - CURRENT LIABILITIES AND PROVISIONS				
A. CURRENT LIABILITIES				
1. Acceptances		0		0
2. Sundry Creditors:				
a) For Goods		0		0
b) Others	6244729	6244729	5394494	5394494
3. Advances Received		0		0
4. Interest accrued but not due on:				
a) Secured Loans / borrowings		0		
b) Unsecured Loans / borrowings		0	0	0
5. Statutory Liabilities:				
a) Overdue		0		0
b) Others		0	0	0
6. Other current Liabilities: Outstanding expenses		29861002	36291830	36291830
TOTAL (A)		36105731		41686324
B. PROVISIONS				
1. For Taxation		0		0
2. Gratuity		0		0
Add: Provision		0		0
Less: Paid to RBFC		0	0	0
3. Superannuation / Pension		0		0
4. Earned Leave Encashment		0		0
Add: Provision		0		0
Less: Paid to RBFC		0	0	0
5. Trade Warranties / Claims		0		0
6. Others (Specify)		0		0
TOTAL (B)		0		0
TOTAL (A + B)		36105731		41686324

SCHEDULE 8(a) - FIXED ASSETS

Particulars of Assets	GROSS BLOCK				Adjusted upto 31.3.2011 on account of			NET BLOCK		
	As on 1.4.2011	For the year		As on 31.3.2012	Grant	As on 31.3.2012	Capital Fund	Total	As on 31.3.2012	As on 31.3.2011
		Additions	Sale/ Adj.							
Non-Plan										
1. Land	783139	0	0	783139	0	0	0	783139		1
2. Internal Roads	332011	0	0	332011	0	0	332010	332010	1	1
3. Buildings	1834158	0	0	1834158	0	1830168	3989	1834157	1	1
4. Furniture & Fixtures	874630	0	0	874630	0	868334	6295	874629	1	1
5. Plant, Machinery & Equipment	2633254	0	0	2633254	0	2627307	5943	2633250	4	4
6. Books & Periodicals	2719188	0	0	2719188	0	2407245	311942	2719187	1	1
7. Transport - Motor Vehicles	115069	0	0	115069	0	104813	10255	115068	1	1
8. Sundry Assets	41276	0	0	41276	0	41273	0	41273	3	3
Total Non-Plan	9332725	0	0	9332725	0	7879140	670434	8549574	783151	783151
Plan										
1. Furniture & Fixtures	1355769	0	0	1355769	0	1327796	27970	1355766	3	3
2. Plant, M/c & Equipment	5768383	0	0	5768383	0	5468970	299406	5768376	7	7
3. Books & Periodicals	7887528	0	0	7887528	0	6416973	1470553	7887526	2	2
4. Buildings	12207513	0	0	12207513	0	5015332	7192166	12207498	15	15
5. Wells	86220	0	0	86220	0	86218	0	86218	2	2
6. Tennis court	15922	0	0	15922	0	7031	8890	15921	1	1
7. Electric Installations	238492	0	0	238492	0	238488	0	238488	4	4
Total Plan	27559827	0	0	27559827	0	18560808	8998985	27559793	34	34
Total Non-Plan & Plan	36892552	0	0	36892552	0	26433948	9669419	36109367	783185	783185

WORKING DETAILS OF ASSETS

Particulars of Assets	GROSS BLOCK			Adjusted upto 31.3.2011 on account of				NET BLOCK		
	As on 1.4.2011	For the year		As on 31.3.2012	Grant	Depreciation	Capital Fund	Total	As on 31.3.2012	As on 31.3.2011
		Additions	Sale/Adj.							
5. Plant, Machinery & Equipment										
a. Office Equipment	1446592	0	0	1446592	0	1443405	3186	1446591	1	1
b. Hostel Equipment	413374	0	0	413374	0	413229	144	413373	1	1
c. Canteen Equipment	293174	0	0	293174	0	290559	2614	293173	1	1
d. Plant, Machinery & equipment	480114	0	0	480114	0	480113	0	480113	1	1
Total P.M.E.	2633254	0	0	2633254	0	2627306	5944	2633250	4	4
8. Sundry Assets										
a. Loose Tools	29363	0	0	29363	0	29362	0	29362	1	1
b. Pumpset	9182	0	0	9182	0	9181	0	9181	1	1
c. Training Aids	2731	0	0	2731	0	2730	0	2730	1	1
Total Sundry Assets	41276	0	0	41276	0	41273	0	41273	3	3
Plan										
A. Furniture & Fixtures										
1. Furniture	578146	0	0	578146	0	578145	0	578145	1	1
2. Modernisation of Seminar Rooms	593909	0	32805	624114	0	563336	60777	624113	1	1
3. Fur. & Fix. For Int. Centre	186314	0	0	186314	0	186313	0	186313	1	1
Total-Fur & Fix	1355769	0	0	1355769	0	1327794	60777	1388571	-32802	3
1. Equipment	132096	0	0	132096	0	132095	0	132095	1	1
2. Letter Press Unit	145172	0	0	145172	0	145171	0	145171	1	1
3. A.V.Trg.Material Division	1997243	0	0	1997243	0	1988755	8487	1997242	1	1
4. Upgradation of nisiet facilities	1164324	0	0	1164324	0	921186	243137	1164323	1	1
5. Installation of Data Processing	2272713	0	0	2272713	0	2233238	39474	2272712	1	1
6. Training Equipment	24684	0	0	24684	0	21557	3126	24683	1	1
7. Press Equipment	32151	0	0	32151	0	26966	5184	32150	1	1
Total PME	5768383	0	0	5768383	0	5468970	299408	5768376	7	7
C. Books & Periodicals										
1. Books	1571054	0	0	1571054	0	1190556	380497	1571053	1	1
2. Periodicals	6316474	0	0	6316474	0	5226417	1090056	6316473	1	1
Total B&P	7887528	0	0	7887528	0	6416973	1470553	7887526	2	2

Particulars of Assets	GROSS BLOCK						Adjusted upto 31.3.2011 on account of				NET BLOCK	
	As on 1.4.2011	For the year		As on 31.3.2012	Grant	Depreciation	Capital Fund	Total	As on 31.3.2012	As on 31.3.2011		
		Additions	Sale/ Adj.									
D. Buildings												
1. International Centre	866648	0	0	866648	0	475776	390871	866647	1	1		
2. Electric -Sub-station	253268	0	0	253268	0	122651	130616	253267	1	1		
3. Doc. Building	1868543	0	0	1868543	0	944625	923917	1868542	1	1		
4. Kitchen Block	221595	0	0	221595	0	115527	106067	221594	1	1		
5. International Hostel	3816583	0	0	3816583	0	1275588	2540994	3816582	1	1		
6. Additional Storey-Doc.Centre	1966256	0	0	1966256	0	690469	1275786	1966255	1	1		
7. Recreation Facilities	282726	0	0	282726	0	124851	157874	282725	1	1		
8. Qrs. For Faculty/HW/S.O.	1286781	0	0	1286781	0	402438	884342	1286780	1	1		
9. Qrs. For P.D.	751798	0	0	751798	0	235122	516675	751797	1	1		
10.Compound Wall & gate	5688	0	0	5688	0	2510	3177	5687	1	1		
11.Replacement of New Hostel	130265	0	0	130265	0	130264	0	130264	1	1		
12.Fencing land	83590	0	0	83590	0	83589	0	83589	1	1		
13.Compound wall	150425	0	0	150425	0	150424	0	150424	1	1		
14.Badminton Court	468930	0	0	468930	0	207078	261851	468929	1	1		
15.Water Sump	54417	0	0	54417	0	54416	0	54416	1	1		
Total Buildings	12207513	0	0	12207513	0	5015328	7192170	12207498	15	15		
<u>Open well & Pipelines</u>												
1. Borewell	13601	0	0	13601	0	13600	0	13600	1	1		
2. Open well	72619	0	0	72619	0	72618	0	72618	1	1		
Total Wells	86220	0	0	86220	0	86218	0	86218	2	2		
F. Tennis Court	15922	0	0	15922	0	7031	8890	15921	1	1		
G. Electric Installations												
1. Street Lights	111796	0	0	111796	0	111795	0	111795	1	1		
2.Laying of Cables	36843	0	0	36843	0	36842	0	36842	1	1		
3. Rewiring of Hostel	37602	0	0	37602	0	37601	0	37601	1	1		
4. Electrification of Badminton Court	52251	0	0	52251	0	52250	0	52250	1	1		
Total Ele.Installations	238492	0	0	238492	0	238488	0	238488	4	4		

FIXED ASSETS 8(b) - FIXED ASSETS

Name of the Asset	Gross Block				Depreciation			Total	Capital Fund	Adjustment on account of				Total (9+10+13)	Net Block as on 31.3.2012	Net Block as on 31.3.2011
	As on 1.04.2011	Additions/ Adjustment	Sale/ Adjustment	Total	As on 1.4.11	Rate %	For the Year			Adjus tment	Upto 31.3.11	For 2011-12	Grants Adjustme nt			
(1)	(2)	(3)	(4)	(5)	(6)	(7)	(8)	(9)	(10)	(11)	(12)	(13)	(14)	(15)	(16)	
Modernisation of nisiet																
Buildings	18943273		419805	19363078	827279	2.50	10495	837774	18115993	0	0	0	18953767	409311	1	
A Block	282377			282377	51182	2.50	5780	56962	0	0	0	0	56962	225415	231195	
B Block	1675990			1675990	12454	2.50	387	12841	1648067	0	0	0	1660908	15082	15469	
C Block	4140639	55306		4195945	28553	2.50	23118	51671	742686	2500000	0	0	3294357	901588	869400	
DEF Block (Gr.Floor)	20347745			20347745	242903	2.50	0	242903	20104841	0	0	0	20347744	1	1	
DEF Block (addl.floor)	30860000	2700307		33560307	0	2.50	1508	1508	0	30860000	2640000	0	33500000	58799	0	
Security Block	509207			509207	8505	2.50	0	8505	500701	0	0	0	509206	1	1	
Training Building	32395605	5829832		38225437	952991	2.50	145227	1098218	14270000	11363524	5829832	0	32561574	5663863	5809090	
Staff Quarters	540260			540260	79968	2.50	10020	89988	59508	0	0	0	149496	390764	400784	
VIP Guest House	84032			84032	1050	2.50	0	1050	82981	0	0	0	84031	1	1	
SENDCC Building	2521117			2521117	58085	2.50	13458	71543	1777664	147044	0	0	196251	524866	538324	
Ducts & Drains	358222			358222	4478	0.00	0	4478	353743	0	0	0	358221	1	1	
Borewell/Pumpset	190013	0		190013	35477	2.50	2515	37992	53921	0	0	0	91913	98100	100615	
External Drainage	514157			514157	1875	0.00	0	1875	512281	0	0	0	514156	1	1	
Internal Roads	6060480			6060480	0	0.00	0	0	3171750	2308000	0	0	5479750	580730	580730	
Infrastructure	2734862		811603	3546465	0	0.00	0	0	1158784	0	0	0	1158784	2387681	1576078	
Landscaping	4430730	0		4430730	405379	2.50	49780	455159	2034143	0	0	0	2489302	1941428	1991208	
Furniture & Fixtures	5410659	310149		5720808	1132590	10.00	90986	1223576	2740825	937530	0	0	8207663	8153	8362	
Electric Sub-Station	8215816			8215816	787140	2.50	209	787349	7420314	0	0	0	4161035	415322	488614	
Equipment	4576357	0		4576357	1823153	15.00	73292	1896445	2264590	0	0	0	946178	592934	28070	
Hotel Equipment	869612	669500		1539112	103273	15.00	104636	207909	738269	0	0	0	5942	524	617	
Garden Equipment	6466			6466	3720	15.00	93	3813	2129	0	0	0	50999	1	1	
Auditorium	51000			51000	10821	0.00	0	10821	40178	0	0	0	127508	117127	5575	
Canteen Facilities	120069		124566	244635	24227	10.00	13014	37241	90267	0	0	0	712599	1	1	
A.V. Equipment	712600			712600	230724	0.00	0	230724	481875	0	0	0	1353003	590	1476	
Solar System	1353593			1353593	484008	60.00	886	484894	868109	0	0	0	1385912	2234160	1	
Air Conditioners	2234161			2234161	430751	0.00	0	430751	417497	1385912	0	0	1578343	487	650	
EPABX	1578830			1578830	71079	25.00	163	71242	1507101	0	0	0	3893179	12568599	895828	
DEF I floor	13464427	0		13464427	429043	2.50	22970	452013	8223407	3893179	0	0	4309391	245678	196413	
Compound Wall	4499505	0	55564	4555069	-15699	2.50	6299	-9400	4318791	0	0	0	6425874	1276141	1308863	
Dining Halls	7702015			7702015	613882	2.50	32722	646604	5779270	0	0	0	63960	0	0	
CRMA Project	0	63960		63960	0	0	0	0	0	0	0	0	423735	0	0	
RC/TP Project	0	423735		423735	0	0	0	0	0	0	0	0	8957527	0	0	
TOTAL	177383819	10052789	1411538	188848146	8838991		607558	9446449	99479655	53395189	8957527	0	62352716	171278850	17569296	15670054

Name of the Asset	Gross Block			Depreciation			Total	Capital Fund	Adjustment on account of				Total (9+10+13)	Net Block as on 31.3.2012 (15)	Net Block as on 31.3.2011 (16)		
	As on 1.04.2011 (2)	Additions/ Adjustment (3)	Sale/ Adjustment (4)	Total (5)	As on 1.4.11 (6)	Rate % (7)			For the Year (8)	Total (9)	Upld 31.3.11 (11)	Grants				Total (13)	
												For 2011-12 (10)					Adjustme nt (12)
Upgradation of SENDOC																	
Equipment	3202113	0		3202113	1151218	15	27923	1179141	1531420	333321	0	333321	3043882	158231	186154		
Fur. & Fix.	642699	0		642699	131330	10	0	131330	218821	292547	0	292547	642698	1	1		
Telephone/ Telex	116597	0		116597	49073	25	0	49073	67523	0	0	0	116596	1	1		
Borewell	99139	0		99139	0	0	0	0	99138	0	0	0	99138	1	1		
Books	4702020	3200		4705220	377032	7.5	31948	408980	2645334	1256878	0	1256878	4311192	394028	422776		
Periodicals	3244959	174993		3419952	285224	7.5	85721	370945	843758	1148019	0	1148019	2362722	1057230	967958		
Computers	13650107	901670		14551777	6672688	60	918682	7591370	3266334	3081619	0	3081619	13939323	612454	629466		
Computers Upgradation	950954			950954	704659	60	112	704771	79136	166973	0	166973	950880	74	186		
Printers for Computers	302667	0		302667	189586	60	28865	218451	19754	45219	0	45219	283424	19243	48108		
Computer Tables	429259	0		429259	86671	10	21641	108312	126162	0	0	0	234494	194765	216406		
Computer Software	1841222	29950		1871172	1033251	60	19122	1052373	584771	221280	0	221280	1858424	12748	1920		
Electronic Publications	1925915	0		1925915	0	0	0	0	917165	1008750	0	1008750	1925915	0	0		
Servers	1424607	0		1424607	158244	60	63218	221462	1080200	80800	0	80800	1382462	42145	105363		
Networking	1082269	113400		1195669	421475	60	74059	495534	322502	328260	0	328260	1146296	49373	10032		
Website	389118	0		389118	0	0	0	0	352443	36675	0	36675	389118	0	0		
Consumables	743579	0		743579	154766	0	0	154766	243925	344888	0	344888	743579	0	0		
Bar Coding	59500	0		59500	0	0	0	0	59500	0	0	0	59500	0	0		
Bandwidth	1388009	0		1388009	555227	100	0	555227	0	832782	0	832782	1388009	0	0		
TOTAL	36194733	1223213		37417946	11970444		1271291	1324735	12457906	9178011	0	9178011	34877652	2540294	2588372		
Schedule 8(a) Total	36892552	0		36892552	26439948		0	26439948	9669419	0	0	0	36109367	783185	783185		
GRAND TOTAL	250471104	11278002		263158644	47249283		1878849	49128132	121607010	62573200	8957527	0	71530727	20892775	19041611		
Works-in-progress:																	
Additional Floor over																	
D.E & F Blocks	30860000	0		30860000	0			0	0	30860000	0	30860000	30860000	0	0		
Total WIP	30860000	8698000		30860000	0			0	0	30860000	0	30860000	30860000	0	0		
GRAND TOTAL	281331104	19974002		294018644	47249283		1878849	49128132	121607010	93433200	8957527	0	102390727	20892775.48	19041611		

SCHEDULES FORMING PART OF BALANCE SHEET AS AT 31st MARCH 2012

(Amount - Rs.)

SCHEDULE 9 - INVESTMENT FROM EARMARKED/ENDOWMENT FUNDS	2011-12	2010-11	
1. In Government Securities			0
2. Other approved Securities			0
3. Shares			0
4. Debentures and Bonds			0
5. Subsidiaries and Joint Ventures			0
6. Others (to be specified)			0
TOTAL	0	0	0
SCHEDULE 10 - INVESTMENTS - OTHERS	2011-12	2010-11	
1. In Government Securities			0
2. Other approved Securities			0
3. Shares			0
4. Debentures and Bonds			0
5. Subsidiaries and Joint Ventures			0
6. Others (to be specified)			0
TOTAL	0	0	0
SCHEDULE 11 - CURRENT ASSETS, LOANS, ADVANCES ETC.	2011-12	2010-11	
A. CURRENT ASSETS:			
<u>1. Inventories:</u>			
a) Stores and Spares		0	0
b) Loose Tools			
c) Stock-in-trade			
Finished Goods			
Work-in-progress			
Raw Materials			
2. Sundry Debtors:			
a) Debts Outstanding for a period exceeding six months			19744344
b) Others	60329049	27335888	47080232
3. Cash balances in hand (including cheques / drafts and imprest)	666711		25854
4. Bank Balances:			
a) with Scheduled Banks:			
- On Current Accounts	10045165		14817556
- On Deposit Accounts (includes margin money)	54000000		58530000
- On Savings Accounts	4015239	68060404	2731440
76078996			
b) With non-Scheduled Banks:			
- On Current Accounts		0	0
- On Deposit Accounts (includes margin money)		0	0
- On Savings Accounts		0	0
5. Post Office-Savings Accounts			0
TOTAL (A)	129056164	123185082	123185082
SCHEDULE 11 - CURRENT ASSETS, LOANS, ADVANCES ETC. (Contd.)	2011-12	2010-11	
B. LOANS, ADVANCES AND OTHER ASSETS:			
<u>1. Loans:</u>			
a) Staff	137302		244576
b) Other Entities engaged in activities/ objectives similar to that of the Entity	0		0
c) Other (specify)	0	137302	0
244576			
<u>2. Advances and other amounts recoverable in cash or in kind or for value to be received:</u>			
a) On Capital Account	971889		2383427
b) Prepayments	0		0
c) Others	1360893	2332782	1978172
4361599			
<u>3. Income Accrued:</u>			
a) On Investments from Earmarked / Endowment Funds	0		0
b) On Investments - Others	0		0
c) On Loans and Advances	274166		351206
d) Others (includes income due unrealised - Rs.)	0	274166	0
351206			
4. Expenditure on Projects under progress			
5. Incometax / TDS		3136307	2667281
TOTAL (B)	5880557	7624662	7624662
TOTAL (A + B)	134936721	130809744	130809744

SCHEDULES FORMING PART OF INCOME & EXPENDITURE FOR THE PERIOD 31st MARCH 2012							
(Amount - Rs.)							
SCHEDULE 16 - INCOME FROM ROYALTY, PUBLICATION ETC.				2011-12		2010-11	
1) Income from Royalty				0		0	
2) Income from Publications						83255	
3) Others:Infrastructure facilities				1162268	1162268	1986298	2069553
TOTAL					1162268		2069553
SCHEDULE 17 - INTEREST EARNED				2011-12		2010-11	
1) On Term Deposits:							
a) with Scheduled Banks				4912622		3337225	
b) With Non-Scheduled Banks				0		0	
c) With Institutions				0		0	
d) Others				0	4912622	0	3337225
2) On Savings Accounts:							
a) with Scheduled Banks				206405		675787	
b) With Non-Scheduled Banks				0		0	
c) With Institutions				0		0	
d) Others				0	206405	0	675787
3) On Loans:							
a) Employees / Staff				8880		22593	
b) Others				0	8880	0	22593
4) Interest on Debtors and Other Receivables						0	
TOTAL					5127907		4035605
SCHEDULE 18 - OTHER INCOME				2011-12		2010-11	
1) Profit on Sale / disposal fo Assets:							
a) Owned assets				0		0	
b) Assets acquired out of grants, or received free of cost				0		0	
2) Export Incentives realised				0		0	
3) Fees for Miscellaneous Services				0		0	
4) Miscellaneous Income				159543	159543	341025	341025
TOTAL					159543		341025
SCHEDULE 19 - INCREASE/(DECREASE) IN STOCK OF FINISHED GOODS & WORK IN PROGRESS				2011-12		2010-11	
a) Closing Stock							
- Finished Goods						0	
- Work-in-progress						0	0
b) Less: Opening Stock							
- Finished Goods						0	
- Work-in-progress						0	0
NET INCREASE / (DECREASE) [a-b]					0		0

SCHEDULE 24 – SIGNIFICANT ACCOUNTING POLICIES

1. ACCOUNTING CONVENTION

The financial statements are prepared on the basis of historical cost convention, unless otherwise stated and on the accrual method of accounting.

2. INVENTORY VALUATION

Inventories are valued at lower of market price or cost basis.

3. FIXED ASSETS

Fixed assets are stated at cost of acquisition inclusive of inward freight, duties and taxes and incidental and direct expenses relating to acquisition.

4. DEPRECIATION

4.1. Depreciation in respect of the Assets: Buildings, Books and Periodicals has been charged on written down value at the rates as prescribed by CPWD Rules and the rest of the assets are depreciated at the rates prescribed by Income Tax Act, 1961.

4.2. In respect of additions to fixed assets during the year, depreciation is considered for full year.

4.3. Assets valuing Rs.5,000/- or less each are provided full depreciation.

5. GOVERNMENT GRANTS

5.1 Revenue grants received from Government towards recurring activities are accounted as Income on accrual basis.

5.2 Grants related to specific fixed assets are shown as a deduction from the Gross value of the asset concerned in arriving at its book value.

SCHEDULE 25 – NOTES TO ACCOUNTS

1. GRANTS

1.1. Unspent grant of Rs.36,63,191/- towards the capital (non-recurring) expenditure on Resource Centre for Traditional Paintings in Handicrafts (RCTP) and Rs.51,10,247/- towards revenue (recurring) expenditure relating to activities was brought forward from 2010-11 and the same was utilized during the year.

1.2. An amount of Rs.2,82,70,931/- was to be received from different Ministries for various activities executed during the year.

1.3. Recurring including amounts receivable and unspent carried forward from 2009-10 & non-recurring grants received during the year including unspent grant brought forward from previous year, expenditure incurred and unspent balance carried to next year are indicated as below:

Nature of grant	Amount Rs.	Expenditure Rs.	Unspent Rs.
(a) Recurring grant:			
1.For activities and projects	20,00,41,437	19,61,72,317	38,69,120
Total (a)	20,00,41,437	19,61,72,317	38,69,120
(b) Non-recurring grant:			
1.Resource Centre for Traditional Paintings	36,63,191	4,23,735	32.39.456
2.Interiors in Training Building	82,98,000	58,29,832	24,68,168
3. Construction of additional floor over D, E & F Guest Rooms Blocks	26,40,000	26,40,000	--
Total (b)	1,46,01,191	88,93,567	57,07,624

1. RETIREMENT BENEFITS

2.1. Liability towards gratuity payable on death/ retirement of employees is provided on accrual basis. However, necessary provision for the period from the inception to 31st March 1988 is to be made in the accounts.

2.2. Provision for accumulated leave encashment benefit to the employees is made on accrual basis and computed on the assumption that employees are entitled to receive the benefit as at each year end. Provision for the period from the inception to 31st March 1988 is, however, to be made.

2.3. Pursuant to the decision taken by the Executive Committee in the 5th meeting held on 1st February, 2010, accumulations under the fund relating to the Employees retirement benefits were transferred to the separate fund account and the same is administered by a Committee called "Retirement Benefits Fund (RBF) Committee."

3. OTHERS

Land includes an area of 43 acres 8 guntas acquired from private parties at the rate of Rs.4,000/- per acre as directed by the Government of Andhra Pradesh. However, it was enhanced to Rs.12,000/- per acre by the City Civil Court and the differential amount of Rs.8,000/- per acre was deposited into the court by the Institute. This additional amount was capitalized as part of the cost of land. However, on appeal preferred by the Institute before the Hon'ble High Court of Andhra Pradesh, on the advise of the Government of India, the High Court reduced the rate per acre by Rs.2,000/- to Rs.10,000/- per acre. The Hon'ble High Court also directed the Special Deputy Collector to collect the differential amount of Rs.2,000/- per acre (totaling to Rs.1,17,648) from various parties to whom the amounts were paid earlier and make over the same to the Institute.

4. CONTINGENT LIABILITIES

4.1. No provision was made for Rs.6,40,861/- pertains to earlier year towards liability for conveyance allowance payable to employees as the matter is pending for final judgement in the Hon'ble High Court of Andhra Pradesh. Further, notice was given to the employees for discontinuance of conveyance allowance with effect from 13.10.1992.

4.2. Disputed demand from the Commissioner of Customs, Central Excise and Service Tax for Rs.3,88,03,987/- towards payment of service tax for the period from 2004-05 to 2008-09 was received on 28.4.2010. In this connection, an Appeal U/s 86(1) of the Finance Act, 1994 was filed

before South Bench of the Customs, Excise and Service Tax Appellate Tribunal, Bangalore. The Appeal was heard by the Bench 18th July, 2012. The Bench considering the submitted facts passed an interim order directing the Institute to deposit an amount of Rs.15.00 lakh on or before 8th October, 2012 subject to final disposal of appeal.

5. **CAPITAL COMMITMENTS**

Estimated value of contracts remaining to be executed on capital account and not provided for (net of advances) was Rs.Nil (Previous year Rs.Nil).

6. **CURRENT ASSETS, LOANS AND ADVANCES**

In the opinion of the Management, the current assets, loans and advances have a value on realization in the ordinary course of business, equal at least to the aggregate amount shown in the Balance Sheet.

7. **TAXATION**

In view of there being no taxable income under Income-tax Act 1961, no provision for Income Tax has been considered necessary.

8. **REMUNERATION TO AUDITORS**

As Auditors

–	Taxation matters	Rs. Nil
–	For Management services	Rs. Nil
–	For certification	Rs.27,575/-

9. Schedules 1 to 25 are annexed to and form an integral part of the Balance Sheet as at 31st March 2012 and the Income and Expenditure Account for the year ended on that date.

10. Corresponding figures for the previous year have been regrouped / rearranged, wherever necessary

Admn. & Accounts Officer Chief Administrative Officer Director General

For Satyanarayana & Co.,
Chartered Accountants
(Firm Regn. No.S-3680)

Place: Hyderabad
Date : 21st September, 2012

Sd/-
J. Jagannadha Rao
Partner
Membership No.06239

NATIONAL INSTITUTE FOR MICRO, SMALL AND MEDIUM ENTERPRISES, HYDERABAD 500045
RECEIPTS AND PAYMENTS FOR THE YEAR ENDING 31st MARCH 2012

	(Amount - Rs.)			(Amount - Rs.)	
	2011-12	2010-11		2011-12	2010-11
RECEIPTS			PAYMENTS		
I. OPENING BALANCES			I. EXPENSES		
(a) Cash in hand	25854	76032	(a) Establishment Expenses:		
(b) Bank balances:			(i) Pay and allowances	29448742	33179624
(i) Incurrent accounts			(ii) Contribution to EPF	2813370	3111339
Andhra Bank	12493	506236	(iii) EL encashment in service	177634	0
Andhra Bank, S.R.Nagar	9018340	268039	(iv) Allowances and Bonus	1756557	1791965
State Bank of India, Yellareddyguda	28516	56643	(v) Staff welfare	290536	314014
SBI, Balkampet	5758208	435115	(vi) Encashment of EL on superannuation	2723868	2909295
(ii) In deposit accounts	58530000	21000000	(vii) Death-cum-Retirement Gratuity	4200218	6337143
(iii) In Savings accounts:			Total I(a)	41410925	47643380
Andhra Bank (IGNOU)	547051	7870	(b) Administrative Expenses:		
State Bank of India, Balkampet	2176519	3319000	(i) Travelling expenses	80013	219714
State Bank of India, Yellareddyguda	7869	58784	(ii) EC/GC/Society meeting expenses	210612	300425
Total I (b)	76078996	25651687	(iii) Audit Fees (including internal audit)		49635
Total I	76104850	25727719	(iv) Advertisement & Publicity	141119	154045
II. GRANTS RECEIVED			(v) Rent, Rates and Taxes	16609	23874
(a) From Government of India:			(vi) Repairs and Maintenance	1019338	1353669
1. Non-recurring-M/o.MSME	0	19636000	(vii) Legal Expenses	51200	77750
2.M/o.MSME for ToTs/EDPs/ESDPs	111121800	103523360	(viii) Office expenses and stationery	302391	340771
3.M/o.HI&Public Enterprises	2064000	8256000	(ix) Bank charges	26337	32263
4.DGE&T, M/o.Labour & Employment	684000	2057400	(x) Property Tax	1097533	0
5.DC(MSME)	2314000	5688000	Total I(b)	2945152	2552146
6.Deptt.of Science & Technology	770000	717500			
7.M/o.Food Processing Industries	4100000	6600000	(c) Activity Expenses:		
8.Ministry of External Affairs	39336659	28105293	(i) National Announced Programmes	4113303	580186
9.Ministry of Finance	720000	950000	(ii) National Sponsored Programmes	63449869	51230651
10.DC(Handlooms), M/o.Textiles	2200000	6504200	(iii) International Programmes	29255385	21118640
11.KVIC, Mumbai, M/o.MSME	1590593	0	(iv) Seminar and Workshops	935757	151671
12.DC(Handicrafts)	155880	3725000	(v) Research & Consultancy Projects	547590	191096
Total II(a)	165056932	185762753	Total I(c)	98301904	73272244

RECEIPTS	2011-12	2010-11	PAYMENTS	2011-12	2010-11
(b) From State Governments:			(d) Comon Essential Services:		
1. Industries Deptt., Kerala	3450000	0	(i) Business development expenses	292646	91269
2. Industries Deptt., Andhra Pradesh		664501	(ii) Photo and video charges	55901	70048
Total II(b)	3450000	664501	(iii) Xerox charges	259487	232105
(c) From Other Sources			(iv) Training of Faculty in India		23173
1. NMDC	480300	513450	(v) Postage and telegrams	273170	219268
2. NBCFDC, New Delhi	0	33750	(vi) Electricity charges	2318850	2037993
3. APSFC, Andhra Pradesh	0	189000	(vii) Water charges	1135423	977420
4. SBI, Mumbai	0	450000	(viii) House keeping expenses	928133	1064248
5. NABARD	0	110000	(ix) Catering charges	5348419	5054986
Total II(c)	480300	1296200	(x) Printing and binding charges	393404	529161
Total II	168987232	187723454	(xi) SENDOC expenses	13283	4332
			(xii) CCIT expenses	620700	912407
III. INCOME ON INVESTMENTS FROM			(xiii) Membership with others	136780	59200
(a) Earmarked/Endowment Funds		0	(xiv) Telephones	368030	470012
(b) Own Funds		0	(xv) Vehicles hire charges	1015461	1010061
Total III		0	Total I(d)	13159687	12755683
IV. INTEREST RECEIVED			TOTAL I	155817668	136223453
(a) On Bank Accounts	5112919	4013012	II. PAYMENTS MADE AGAINST FUNDS		
(b) Loans, Advances, etc.	167260	136732	FOR VARIOUS PROJECTS		
Total IV	5280179	4149744	1. CRMA (DC Handlooms sponsored)	2261060	933216
V. OTHER INCOME			2. RCT Paintings (DC Handicrafts Project)		1240809
(a) From Activities:			(including Rs.40939 non-recurring exp.)	2589809	
(i) National Announced Programmes	8221440	4050150	3. IPFC (DC (MSME sponsored)		3728772
(ii) National Sponsored Programmes	928902	5236833	(include Rs.2517531 non-recurring exp)	1162900	
(iii) Seminars and Workshops	115000	671840	4. Mubarakpur Handloom Cluster (DC-Handlooms sponsored)	1983796	1504833
(iv) Collaborative Seminars/Workshops	1670945	0	5. Barabanki Handloom Cluster (DC-Handlooms sponsored)	3383384	3050871
(viii) Research/Counsellancy Projects	861968	0	TOTAL II	11380949	10458501
Total V (a)	11798255	9958823	III. INVESTMENTS AND DEPOSITS MADE		
			(a) Out of earmarked/endowment funds	0	0
(b) Others			(b) Out of Own funds	0	0
(i) Library Membership Fee	990700	911900	Total III	0	0
(ii) Subscription/scale of publications	62930	83255			
(iii) Infrastructure services	1162268	1986298			
(iv) Licence Fee for Quarters	93327	89921			
(vi) Sale of scrap		12000			
(vi) Accrued income	2603754	5722138			
(vii) Prior period income	611	63431			
(viii) Application fee for posts	1000	8000			

RECEIPTS	2011-12	2010-11	PAYMENTS		2011-12	2010-11
(ix) IPFC Membership Fee	161927	312512	IV. EXPENDITURE ON FIXED ASSETS AND CAPITAL WORKS-IN-PROGRESS			
(x) Application Fee from Partner Institutions	35000	160000	(a) Purchase of Fixed Assets:			
(xi) Premises Lease	30216	71104	(i) Furniture	310149	308954	
			(ii) Equipment	0	257935	
Total V (b)	5141733	9420559	(iii) Hostel Equipment	669500		
(c) Grants Receivables received			(iv) Additional Floor over D,E & F Blocks	2700307	8698000	
(i) KV/C	490000		(v) Development of Vacant Land	0	156409	
(ii) NMDC	607500		(vi) Interiors to Training Bldg.	5829832		
(iii) NBCFDC	101250		(xiii) Periodicals	174993	208444	
(iv) SBI	270000		(xiv) Books	3200	61451	
(v) Govt. of Andhra Pradesh	1604642		(xv) Computers	901670	1496955	
(vi) Ministry of External Affairs	8146147		(xvi) Printers	0	102138	
(vii) DC(Handicrafts)	403310		(xvii) Computer software	29950		
(viii) DC(MSME)	1300000		(xviii) Cabling/Networking	113400		
(ix) M/o. Food Processing Industries	622000		(xix) Servers	0	263407	
(x) DST (through EDI)	105000		(xx) Borewell-Motor	0	48404	
Total V(c)	13649849	0	Total IV	10733001	11602097	
Total V	30589837	19379382	V. REFUND OF SURPLUS MONEY/ LOANS			
			(a) To the Government of India:			
			(i) Conveyance Loan	0	0	0
VI. AMOUNT BORROWED	0	0	(ii) House Building Loan	0	0	0
			(b) To the State Government	0	0	0
			(c) To others	0	0	0
			TOTAL V	0	0	0
			VI. FINANCE CHARGES (INTEREST)			
VII. OTHER RECEIPTS			(a) Interest on Conveyance Loan	0	0	0
(a) Loans and Advances to Staff:			(b) Interest on House Building Loan	0	0	0
			TOTAL VI	0	0	0
(i) House Building Advance	54730	175060	VII. OTHER PAYMENTS			
(ii) Festival Advance	22800	3900	(1) Outstanding expenses	11940765	7738547	
(iii) Temporary advance	30423	38694	(2) Deposits (Participation in Tenders)	50000	0	
(iv) Study Tour advance	84499	27900	(3) Perior period expenses	379065	363832	
(v) Tour advance		193359	(4) Study Tour Advance	615	0	
(b) Sundry creditors:			(5) CPF Trust	31024	81043	
(i) Refundable to MEA		768000	(6) Programme Advance		308381	
(ii) Programme Advance.	502656		(7) Refundable to MEA	768000	0	
(iii) V.R.Associates, Architects			(8) V.R.Associates, Architects & Engineers	70993	0	
(iv) RDS Consulting Architects			TOTAL VII	13240462	8491803	

RECEIPTS	2011-12	2010-11	PAYMENTS	2011-12	2010-11
(c) Others:					
(i) CPF Trust			VIII. PAYMENTS TO AGENCIES		
(ii) Salaries payable	7664	0			
(iii) DA Arrears payable	1527	2780	1. Agencies of APEX Programmes	7180545	0
(iv) Union			2. Partner Institutions	14763235	0
(v) Security Deposits	112454	3842878	TOTAL VIII	21943780	0
(vi) Withheld Salaries	35730	36278			
(vii) LTC Advance	28394	25800	VIII. CLOSING BALANCES		
(viii) LIC		1500	(a) Cash in hand	666712	25854
(viii) Refund of Income Tax on income		784256	(b) Bank balances:		
TOTAL VII	880877	5900405	(1) SBI, Yellareddyguda	11843	12493
			(2) Andhra Bank	4310029	9018340
			(3) Andhra Bank, S.R.Nagar	596498	28516
			(4) SBI, Balkampet	5126795	5758208
			(c) In deposits accounts		58530000
			(1) Andhra Bank, Srinagar Colony Branch	34000000	
			(2) SBI, A.C. Guards Branch	10000000	
			(3) Andhra Bank, S.R.Nagar Branch	10000000	
			(d) In Savings accounts:		
			(1) SBI, Yellareddyguda	1064981	547051
			(2) SBI, Balkampet	2942388	2176519
			(3) Andhra Bank (GNOLU)	7869	7869
			TOTAL VIII	68727115	76104850
TOTAL	281842975	242880704	TOTAL	281842975	242880704

Sd/-
Admn. & Accounts Officer

Sd/-
Chief Administrative Officer

Sd/-
Director General

For Satyanarayana & Co.,
Chartered Accountants
(Firm Registration No. S-3680)

Sd/-
J. Jagannadha Rao
Partner
Membership No.06239

Place: Hyderabad
Date : 21st September, 2012